

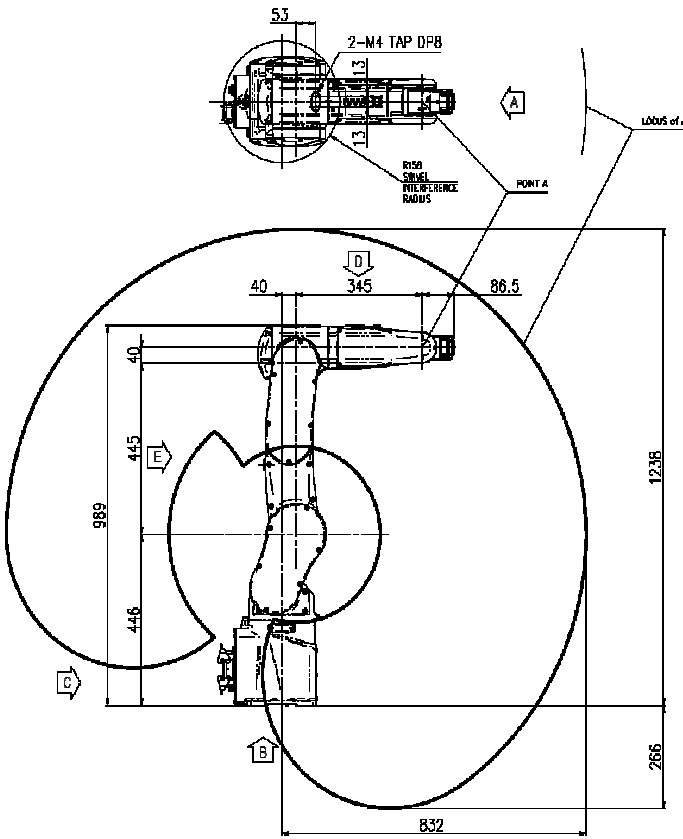
HH7

Installation method		Application	
Floor	●	Spot welding	
Ceiling	●	Arc welding	
Wall surface	●	Handling	●
		Assembly	●
		Sealing	●
		Painting	

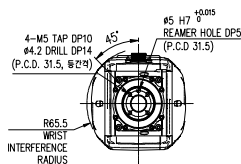
Item		Specification		
Robot model		HH7		
Payload		7 Kg		
Structure		Articulated		
Degree of freedom		6 axes		
Drive system		AC SERVO MOTOR		
Max. working envelope	Arm	S	Swivel	± 2.967 rad ($\pm 170^\circ$)
		H	Horizontal	55°
		V	Vertical	70°
	Wrist	R2	Rotation 2	± 3.316 rad ($\pm 190^\circ$)
		B	Bending	± 2.356 rad ($\pm 135^\circ$)
Max. working speed	Arm	S	Swivel	6.544 rad / s (455° / s)
		H	Horizontal	5.497 rad / s (385° / s)
		V	Vertical	7.155 rad / s (520° / s)
	Wrist	R2	Rotation 2	9.599 rad / s (550° / s)
		B	Bending	9.599 rad / s (550° / s)
Wrist torque	R1	Rotation 1	17.453 rad / s (1000° / s)	
	R2	Rotation 2	17 N.m (1.73 Kgf.m)	
	B	Bending	17 N.m (1.73 Kgf.m)	
Accuracy of position repeatability		± 0.03 mm		
Ambient Temperature		0 ~ 45 °C (273 ~ 313 K)		
Robot's Weight		42 Kg		
Working envelope section area		1.98 m ²		

*) When the optional limit switch is attached, the action range of the main axis

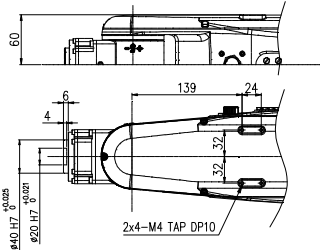
will be limited (see the manual)



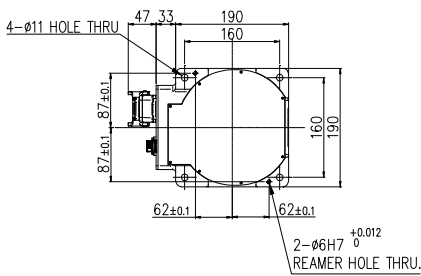
View A: Detailed drawing of the wrist attachment



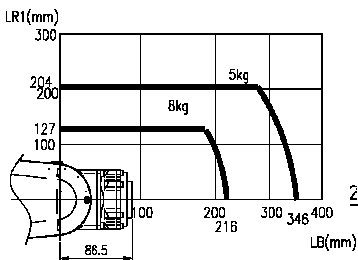
View B: Dimensional drawing for the floor installation of the body



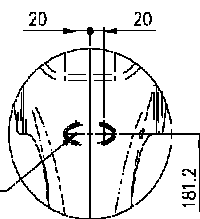
View G: Application part mounting



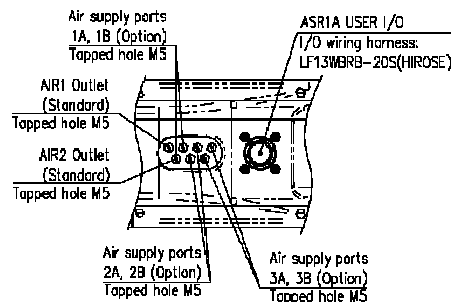
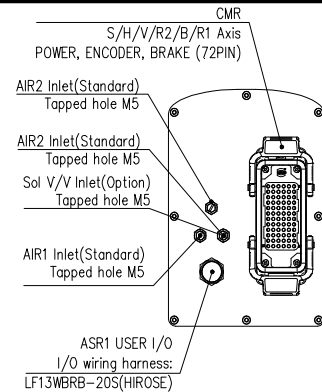
View E: Application part mounting



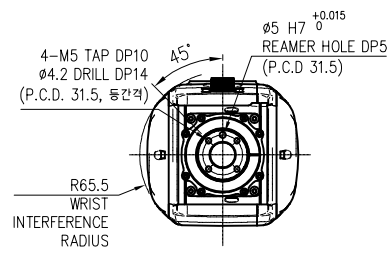
Wrist-axis torque line diagram



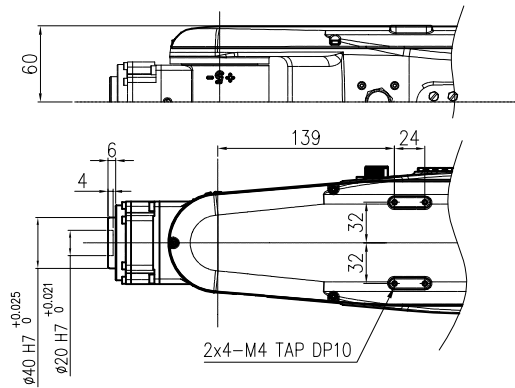
View D: Application cable connection part



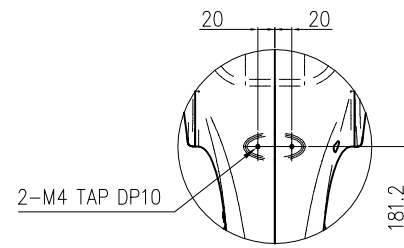
** For product improvement, some of the ratings, specifications, dimensions, etc. are subject to changes without notice



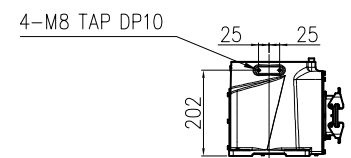
VIEW "A"



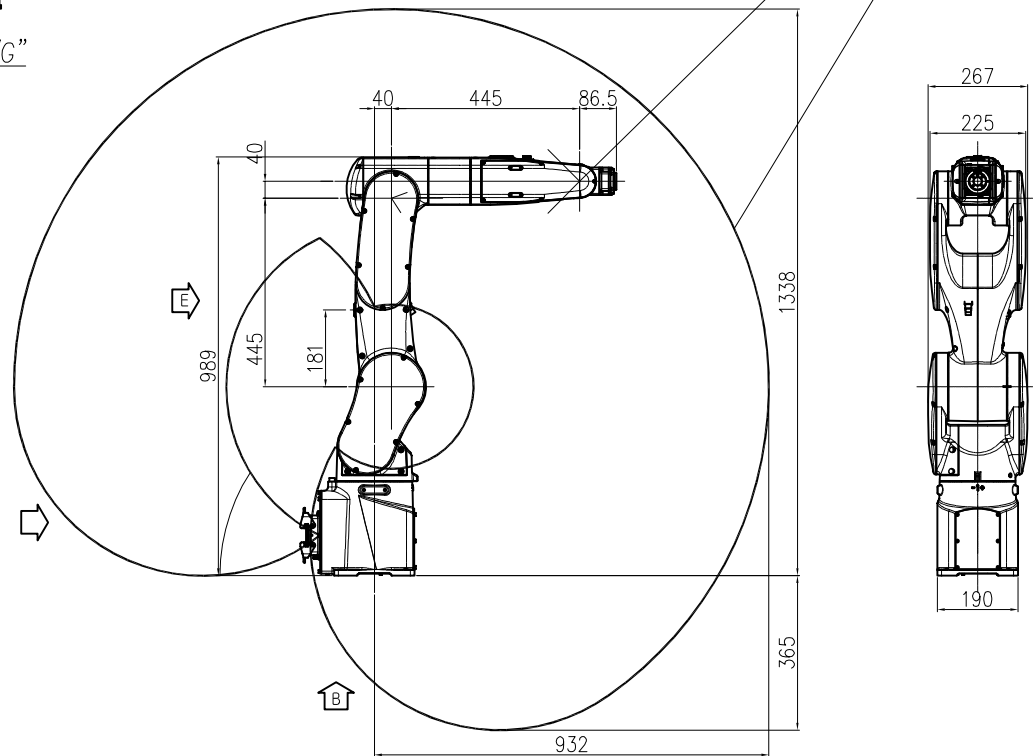
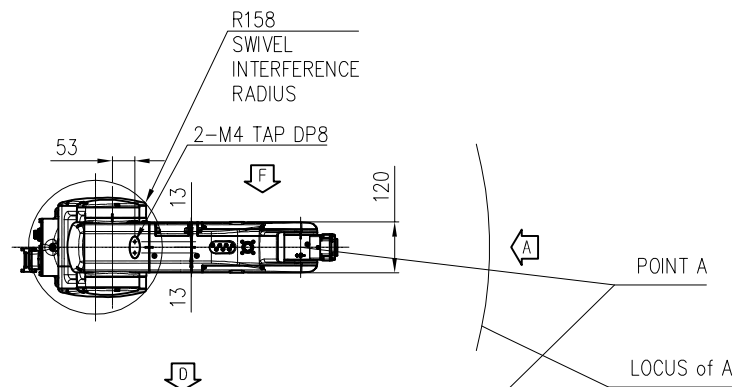
VIEW "F"



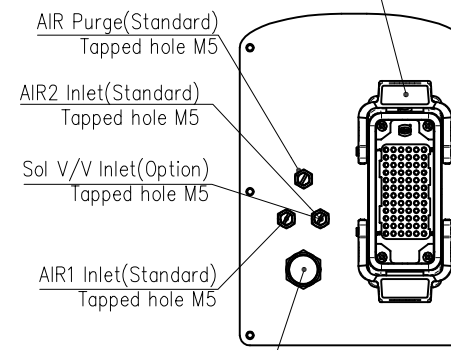
VIEW "E"



DETAIL "G"

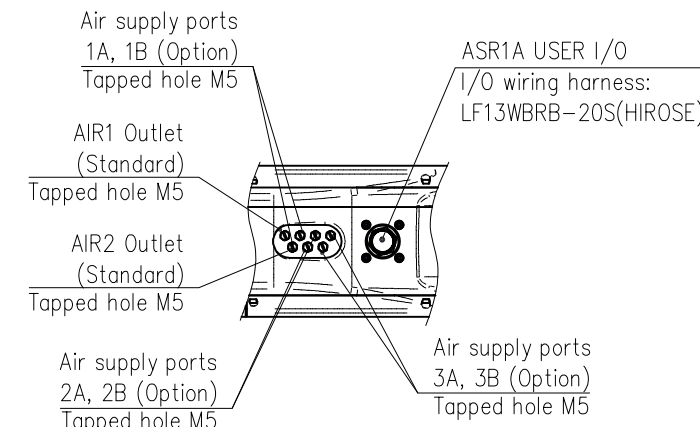


CMR
 S/H/V/R2/B/R1 Axis
 POWER, ENCODER, BRAKE (72PIN)

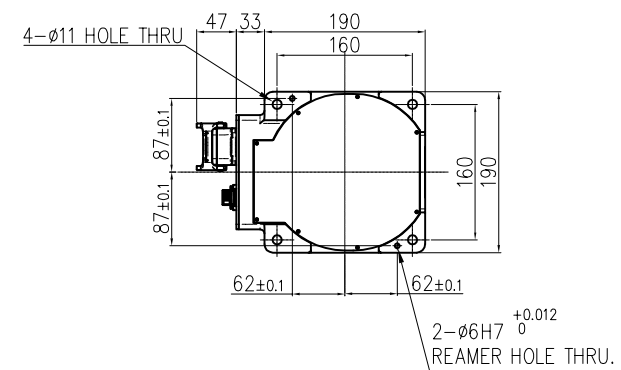


ASR1 / ASR1A User I/O Wiring Harness				
Pin No.	Description	Pin No.	Description	Option
1	1 (User ID)	11	11 (User ID)	
2	2 (User ID)	12	12 (User ID)	1A(sol v/v)
3	3 (User ID)	13	13 (User ID)	1B(sol v/v)
4	4 (User ID)	14	14 (User ID)	2A(sol v/v)
5	5 (User ID)	15	15 (User ID)	2B(sol v/v)
6	6 (User ID)	16	16 (User ID)	3A(sol v/v)
7	7 (User ID)	17	17 (User ID)	3B(sol v/v)
8	8 (User ID)	18	18 (User ID)	G(sol v/v)
9	9 (User ID)	19		
10	10 (User ID)	20		

VIEW "C"



VIEW "D"



VIEW "B"

MODEL	His3ue.4
DATE	2020.05.19

TECHNICAL SPECIFICATION SUBJECT TO
 CHANGE WITHOUT NOTICE

