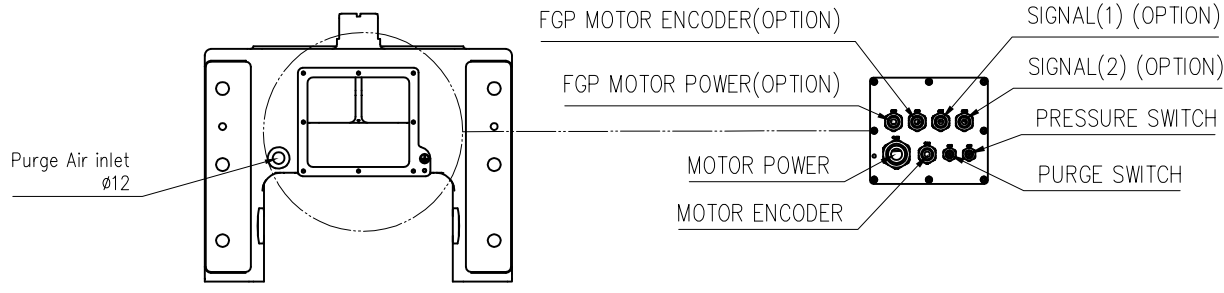
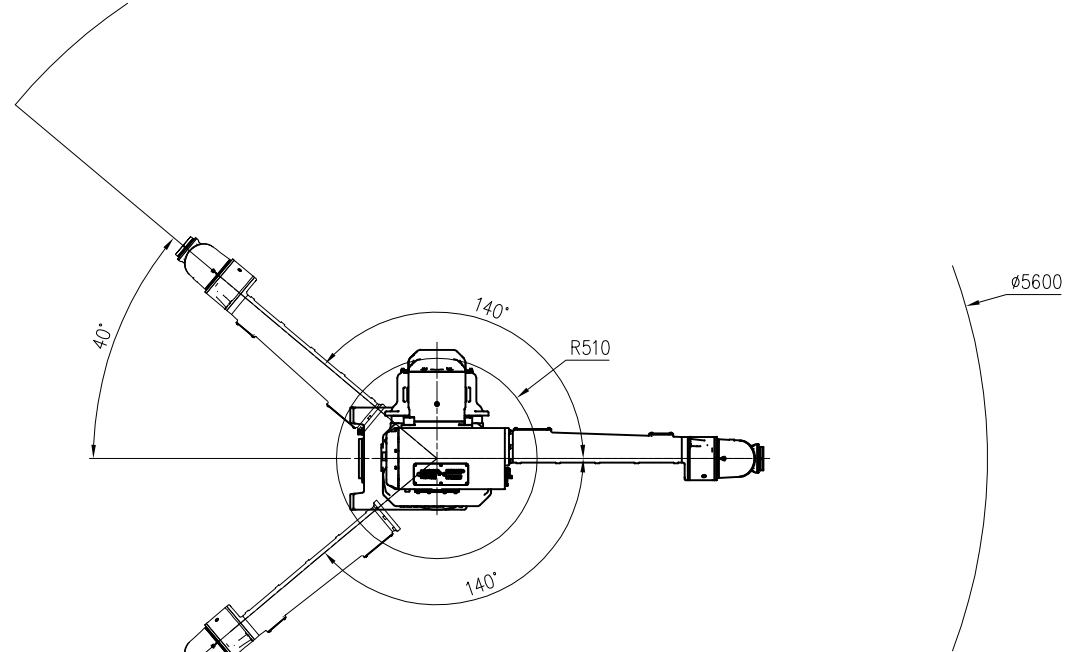
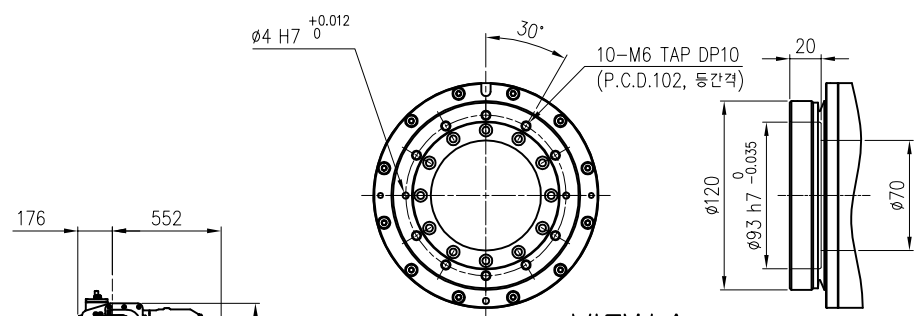
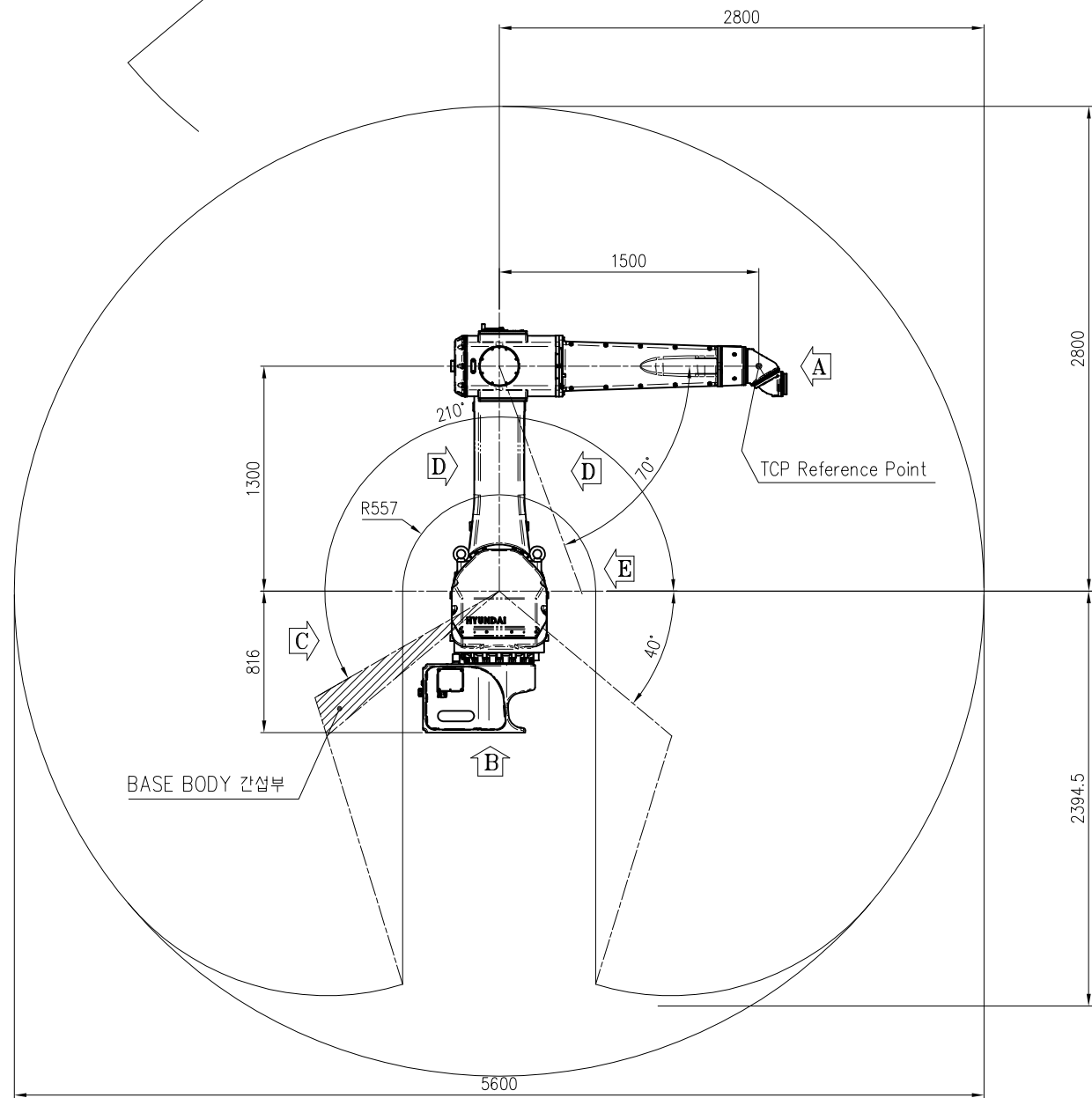


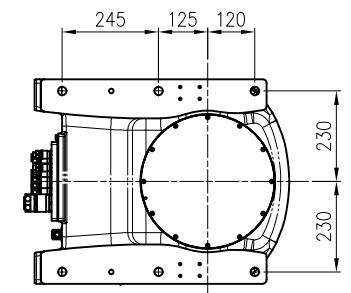
Item	Model	YP015-28
Installation		Floor
Degree of Freedom		6
Repeatability		±0.2mm
Painting Speed		1500mm/s
Robot Weight		580 kg
Motion Range & Speed	S-Axis	±160°, 100°/s
	H-Axis	±280°, 100°/s
	V-Axis	±330°, 100°/s
	R2-Axis	±720°, 450°/s
	B-Axis	±720°, 540°/s
Payload	R1-Axis	±720°, 600°/s
	Wrist	15kg
	Outer arm	15kg
Ambient Conditions	Inner arm	15kg
	Temperature	0 ~ 45°C
Hazardous location certification (인증 중)	Humidity	20 ~ 85%RH (non-condensing)
		ATEX CE II 2 G c Ex ib px IIB T4 Ta=0°C to +45°C



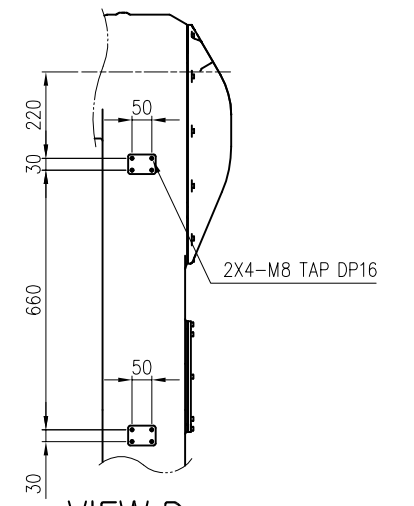
VIEW C
(SCALE 3/1)



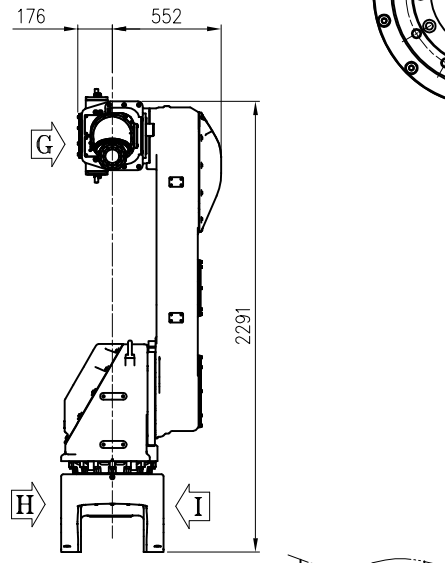
VIEW A
(SCALE 8/1)



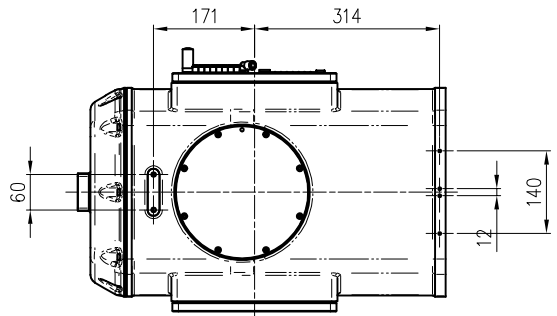
VIEW B
(SCALE 2/1)



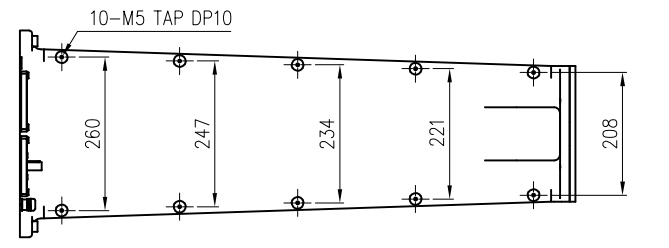
VIEW D
(SCALE 2/1)



VIEW E
(SCALE 3/1)
(배면대칭 동일)



VIEW F
(SCALE 3/1)



VIEW G
(SCALE 3/1)



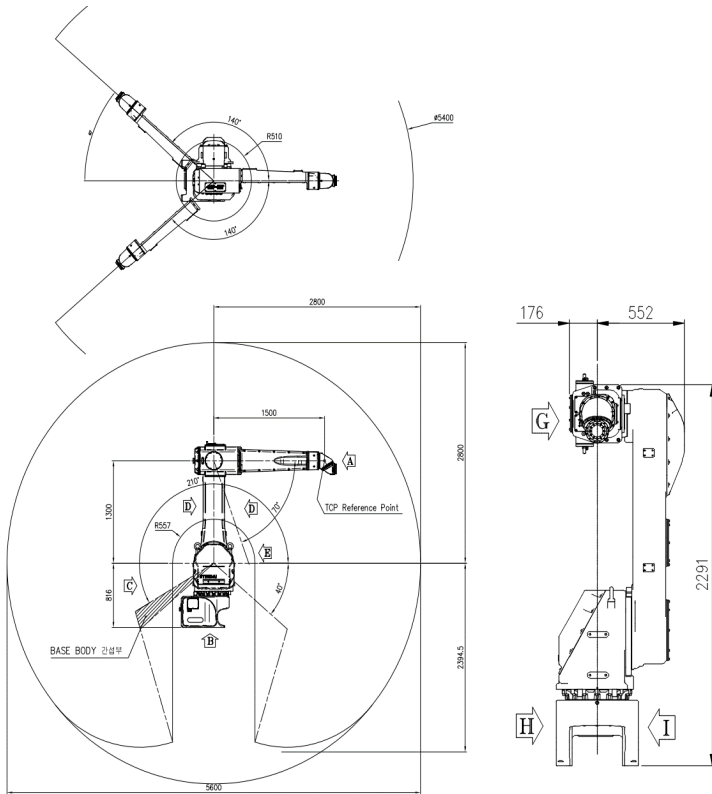
TECHNICAL SPECIFICATION SUBJECT TO CHANGE WITHOUT NOTICE

MODEL	YP015A-28	issue.0
DATE	2020.11.17	

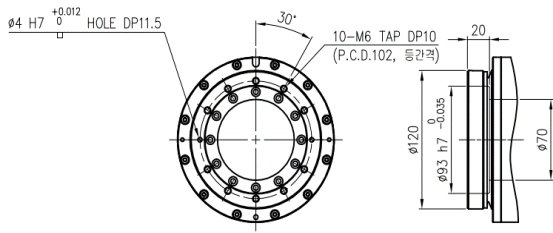


YP015A-28

Installation		Application	
Floor	●	Spot Welding	
Ceiling		Arc Welding	
Wall	●	Handling	
		Assembly	
		Sealing	
		Painting	●

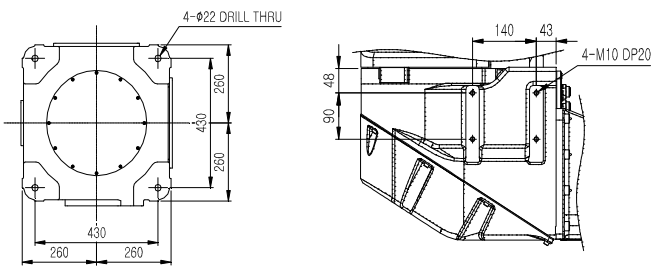


VIEW A Wrist Flange pec.

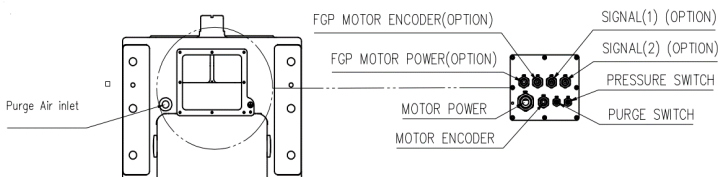


VIEW B Body Installation

VIEW F Bolt Spec. for App.



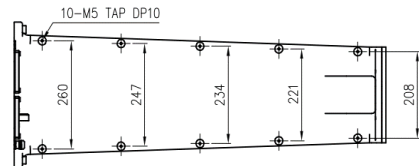
VIEW C Application Cable



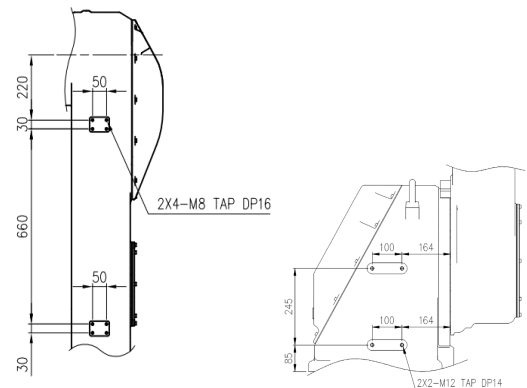
Items		Specification
Model		YP015-28
Payload	Wrist	15 Kg
	Outer arm	15 Kg
	Inner arm	15 Kg
Structure		Articulated
Degree of Freedom		6 Axes
STROKE	Main	S $\pm 2.443 \text{ rad } (\pm 140^\circ)$
		H $-0.873 \sim +4.014 \text{ rad } (-40^\circ \sim +210^\circ)$
		V $-1.222 \sim +4.537 \text{ rad } (-70^\circ \sim +90^\circ)$
Wrist	R2 $\pm 6.283 \text{ rad } (\pm 360^\circ)$	
	B $\pm 6.283 \text{ rad } (\pm 360^\circ)$	
	R1 $\pm 6.283 \text{ rad } (\pm 360^\circ)$	
SPEED	Main	S 2.793 rad / s (160° / s)
		H 2.793 rad / s (160° / s)
		V 2.793 rad / s (160° / s)
Wrist	R2 7.854 rad / s (450° / s)	
	B 9.425 rad / s (540° / s)	
	R1 10.472 rad / s (600° / s)	
Repeatability		$\pm 0.2 \text{ mm}$
Ambient Condition	Temp.	0 ~ 40 °C (273 ~ 313 K)
	Humid.	20~85%RH (non-condensing)
Weight		600 kg
Certificate No.		IECEX DEK 20.0016 (DEKRA 20ATEX0028)
Explosion Proof	Ex Code	Ex Ib [Ib] pxb IIB T4 Gb ⊕ II 2 G Ex ib [Ib] pxb IIB T4 Gb
	Ex Ib	Intrinsic Safety (Zone 1)
	pxb	Pressurised
	IIB	Gas Group : Ethylene
	T4	Maximum Surface Temp. of Equipment : 135 °C
	Gb	Zone 1

*) Wall Installation : S-Axis speed 1.745rad / s (100° / s)

VIEW E Bolt Spec. for App.Cable



VIEW D Bolt Spec. for App.Cable



** Technical specification subject to change without notice