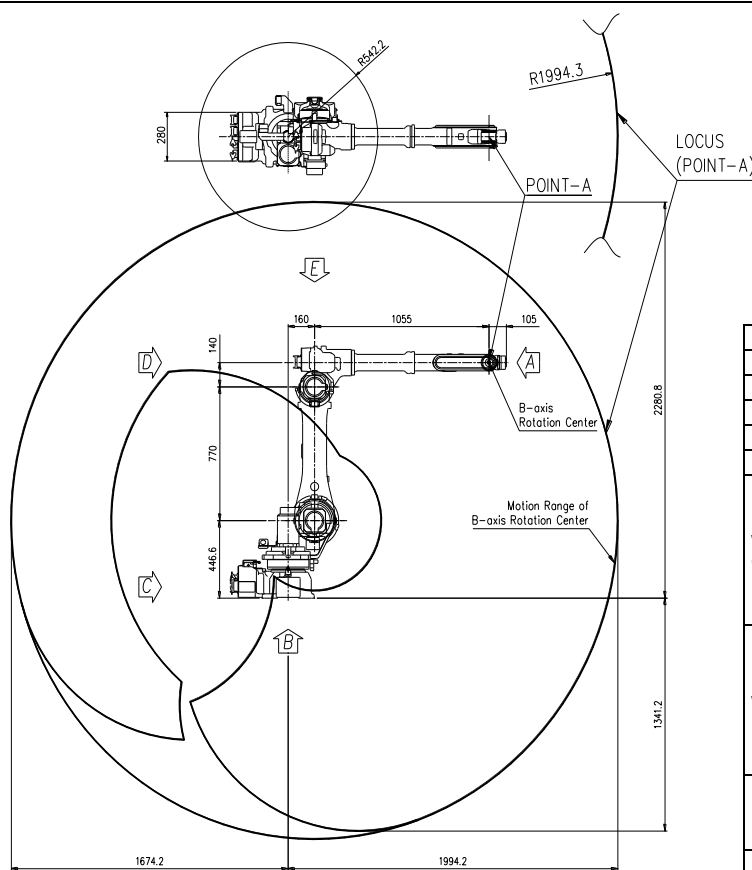


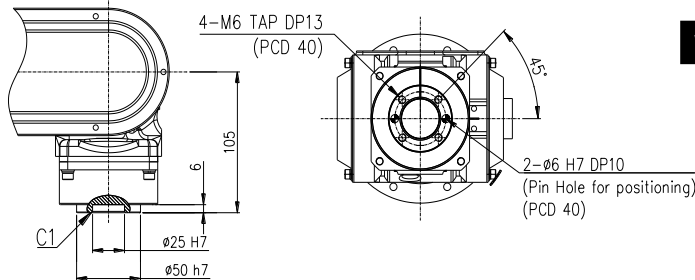
HA006L

Payload 6Kgf

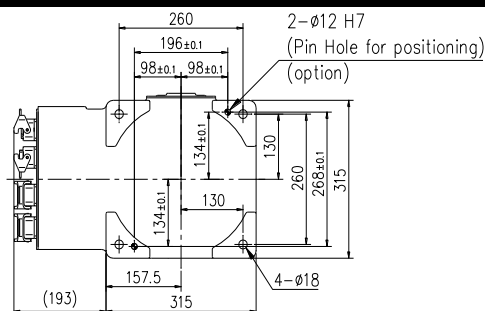
Installation method		Application	
Floor	●	Spot welding	
Ceiling	●	Arc welding	●
Wall surface	●	Handling	●
		Assembly	●
		Sealing	●
		Painting	



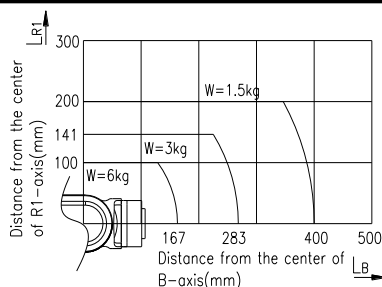
View A: Detailed drawing of the wrist attachment part



View B: Dimensional drawing for the floor installation of the body

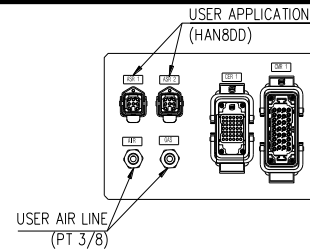


Wrist-axis torque line diagram

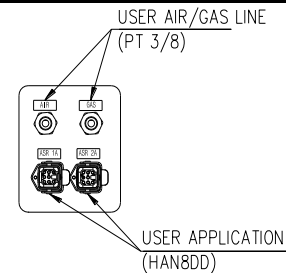


Item		Specification	
Robot model		HA006L	
Payload		6 Kg	
Structure		Articulated	
Degree of freedom		6 axes	
Drive system		AC SERVO MOTOR	
Max. working envelope	Arm	S Swivel	$\pm 3.229 \text{ rad } (\pm 185^\circ)$
		H Horizontal	$+3.403 \sim -1.222 \text{ rad } (+195^\circ \sim -70^\circ)$
		V Vertical	$+3.141 \sim -1.396 \text{ rad } (+180^\circ \sim -80^\circ)$
	Wrist	R2 Rotation 2	$\pm 3.403 \text{ rad } (\pm 195^\circ)$
		B Bending	$\pm 2.356 \text{ rad } (\pm 135^\circ)$
Max. working speed	Arm	S Swivel	3.316 rad / s (190° / s)
		H Horizontal	3.142 rad / s (180° / s)
		V Vertical	3.316 rad / s (190° / s)
	Wrist	R2 Rotation 2	6.63 rad / s (380° / s)
		B Bending	7.50 rad / s (430° / s)
Wrist torque	R2 Rotation 2	39.2 Nm (4.0 Kgfm)	
	B Bending	9.8 Nm (1.0 Kgfm)	
	R1 Rotation 1	5.9 Nm (0.6 Kgfm)	
Accuracy of position repeatability		$\pm 0.08 \text{ mm}$	
Ambient Temperature		0 ~ 45 °C (273 ~ 318 K)	
Robot's Weight		224 Kg	
Working envelope section area		7.88 m ²	

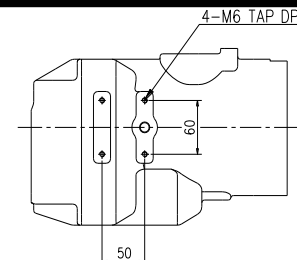
View C: Application cable connection part (Option)



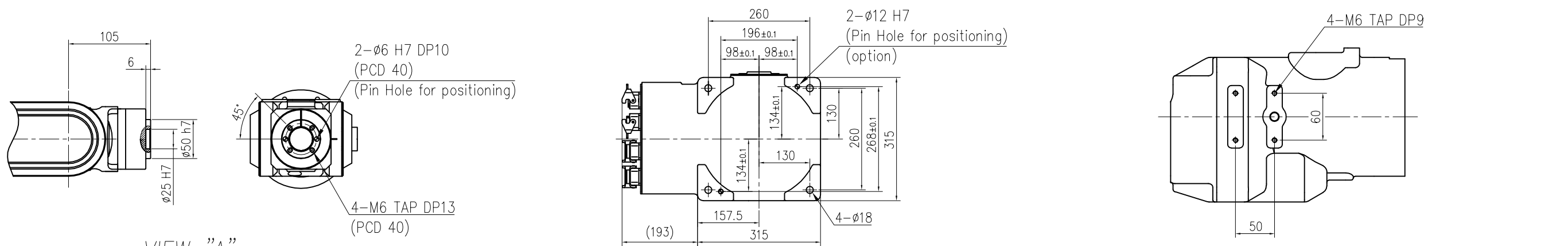
View D: Application cable connection part (Option)



View E: Details of the application ancillary part attachment



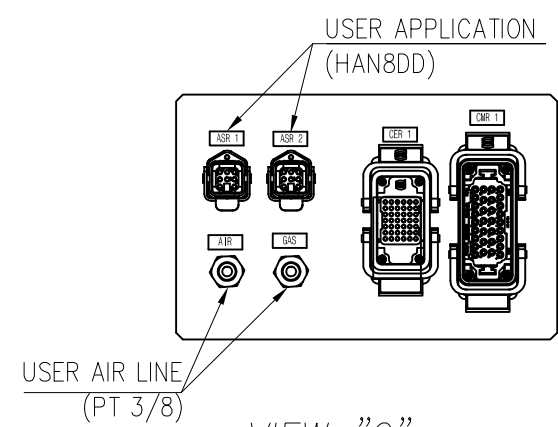
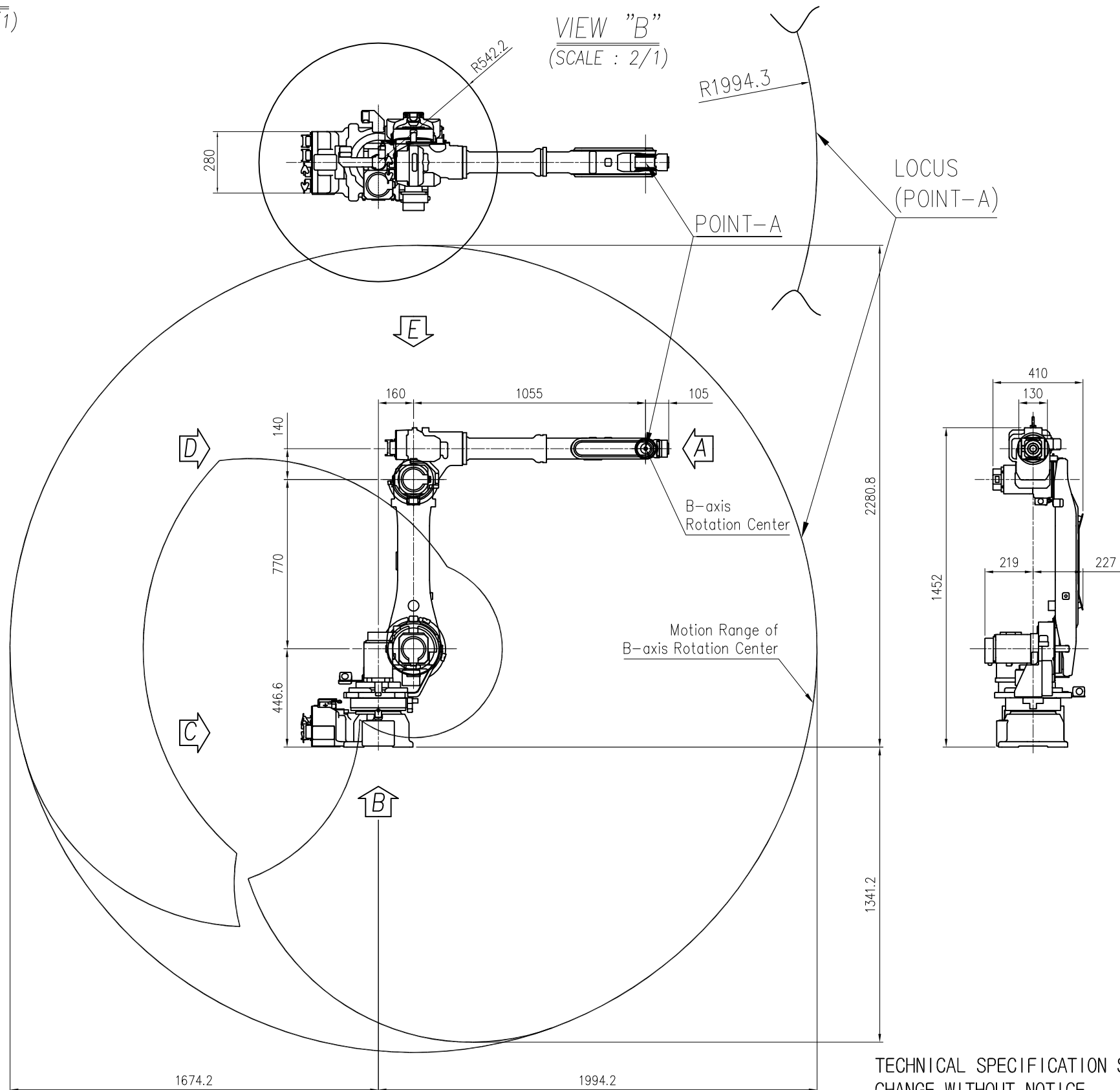
** For product improvement, some of the ratings, specifications, dimensions, etc. are subject to changes without notice.



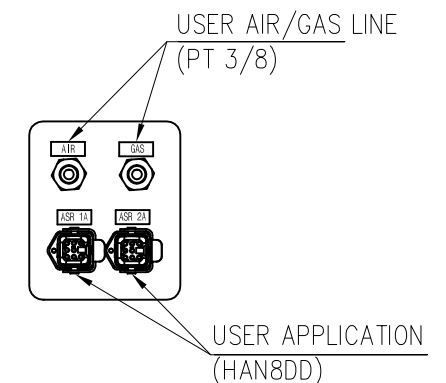
VIEW "A"
(SCALE : 4/1)

VIEW "B"
(SCALE : 2/1)

VIEW "E"
(SCALE : 4/1)



VIEW "C"
(SCALE : 4/1)



VIEW "D"
(SCALE : 4/1)

TECHNICAL SPECIFICATION SUBJECT TO CHANGE WITHOUT NOTICE

MODEL	HA006L	issue.0
DATE	2018.06.19	

