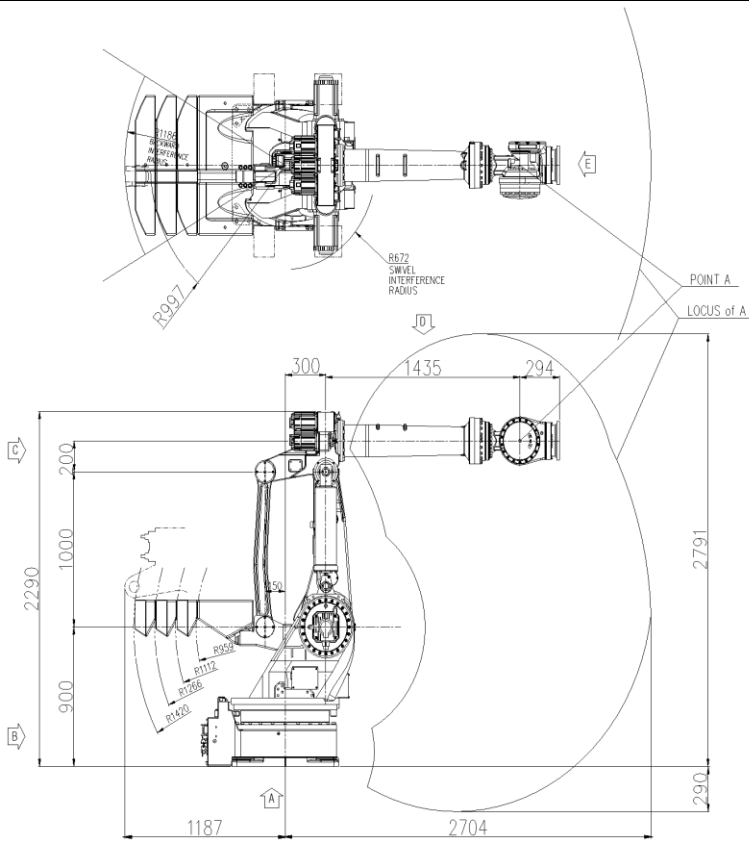


HX600

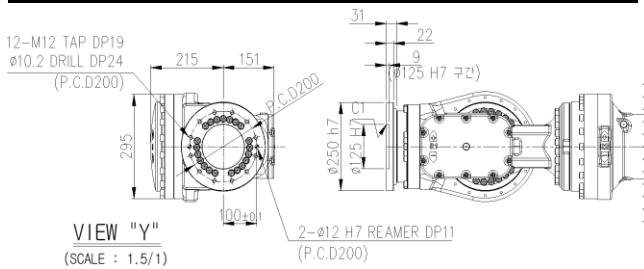
Payload 600Kgf

Installation method	
Floor	●
Ceiling	
Wall surface	

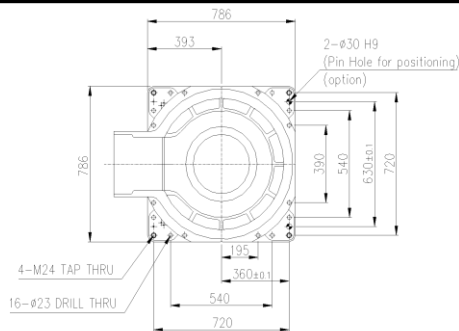
Application	
Spot welding	●
Arc welding	
Handling	●
Assembly	
Sealing	●
Painting	



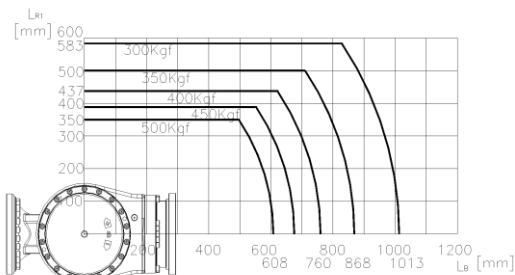
VIEW E: Detailed drawing of the wrist attachment part



VIEW A: Dimensional drawing for the floor installation of the body

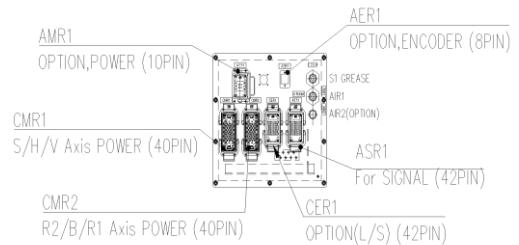


Wrist-axis torque line diagram

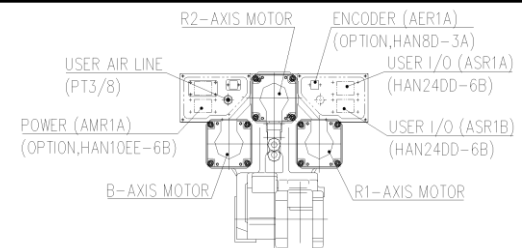


Item		Specification	
Robot model		HX600	
Payload		600 Kg	
Structure		Articulated	
Degree of freedom		6 Axes	
Drive system		AC SERVO MOTOR	
Max. working envelope	Arm	S Swivel	±3.142 rad (±180°)
		H Horizontal	+2.88 ~ +0.26 rad (+165° ~ +15°)
		V Vertical	+1.04 ~ -1.22 rad (+60° ~ -70°)
	Wrist	R2 Rotation 2	±6.283 rad (±360°)
		B Bending	±6.283 rad (±360°)
Max. working speed	Arm	S Swivel	1.22 rad / s (70° / s)
		H Horizontal	1.04 rad / s (60° / s)
		V Vertical	1.04 rad / s (60° / s)
	Wrist	R2 Rotation 2	1.39 rad / s (80° / s)
		B Bending	1.39 rad / s (80° / s)
Wrist torque	R1 Rotation 1	2.45 rad / s (125° / s)	
	R2 Rotation 2	3,863 N.m (394 Kgf.m)	
	B Bending	3,863 N.m (394 Kgf.m)	
R1 Rotation 1	1,882 N.m (192 Kgf.m)		
Accuracy of position repeatability		±0.12 mm	
Ambient Temperature		0 ~ 40 °C (273 ~ 313 K)	
Robot's Weight		3,200 Kg	
Working envelope section area		4.95 m ²	

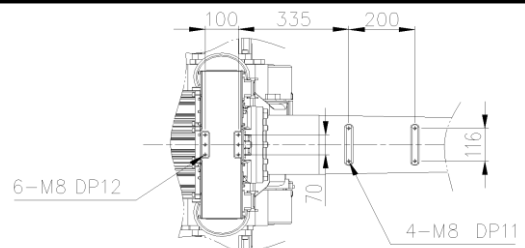
VIEW B: Application cable connection part (Option)



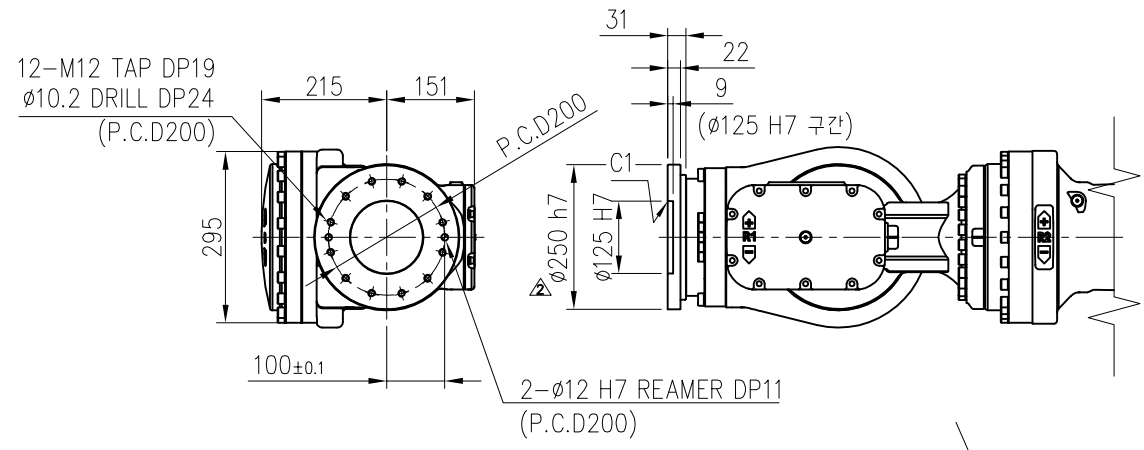
VIEW C: Application cable connection part (Option)



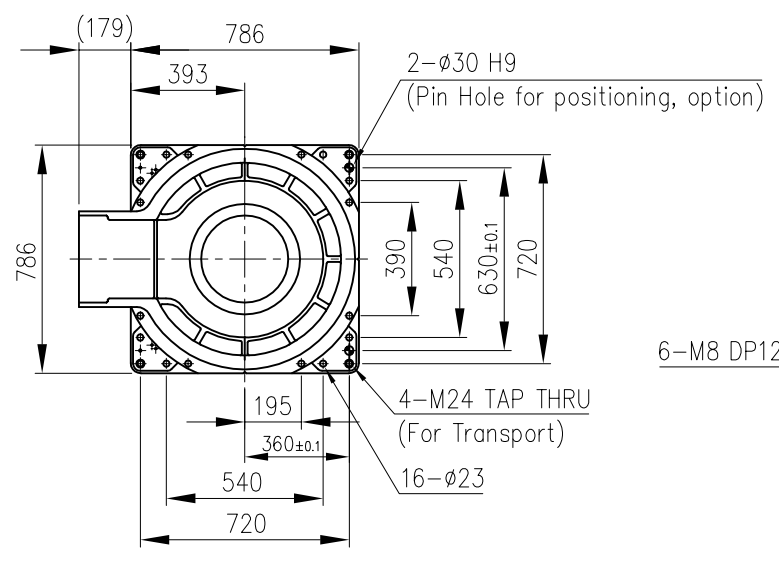
VIEW D: Details of the application ancillary part attachment



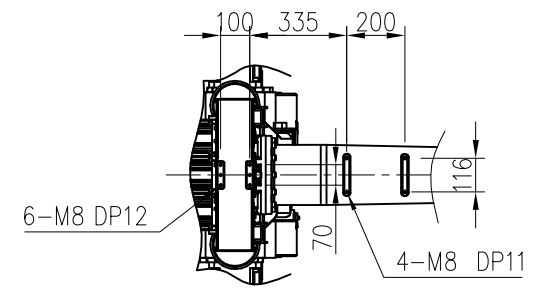
** For product improvement, some of the ratings, specifications, dimensions, etc. are subject to changes without notice.



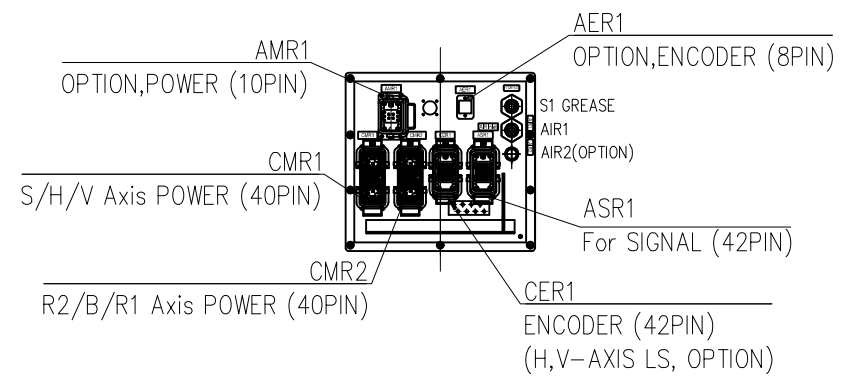
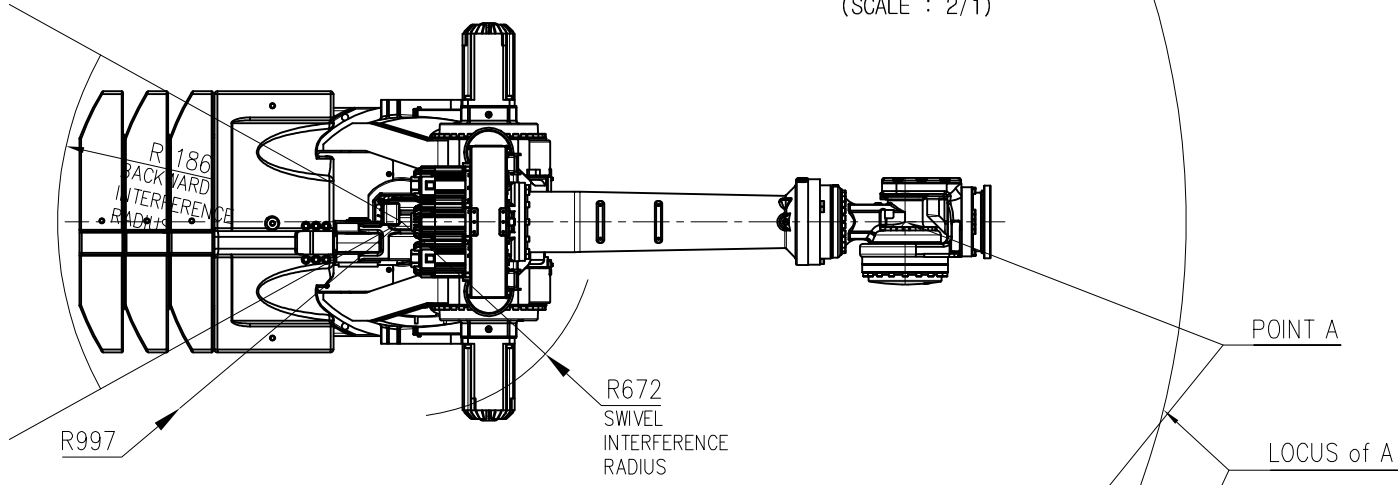
VIEW "A"
(SCALE : 2/1)



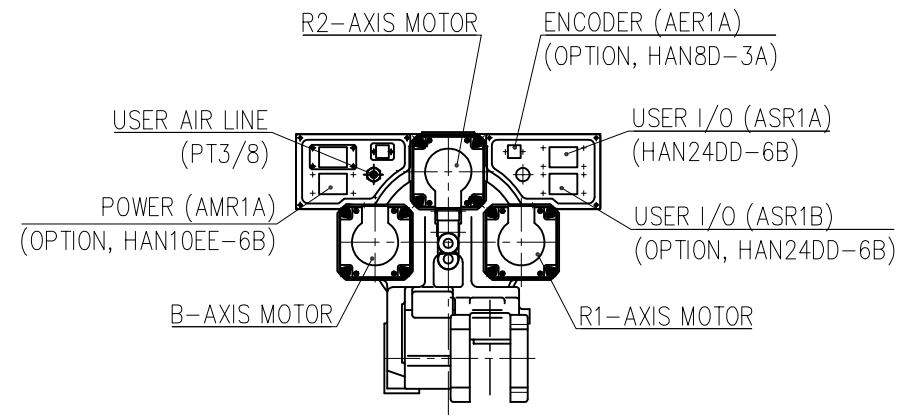
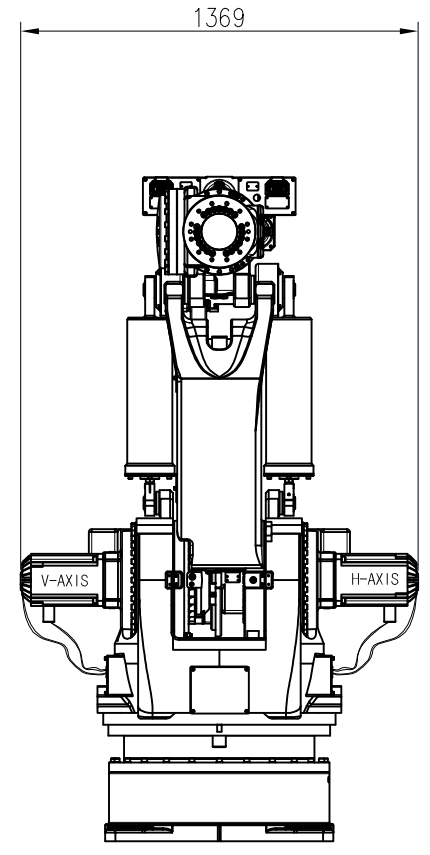
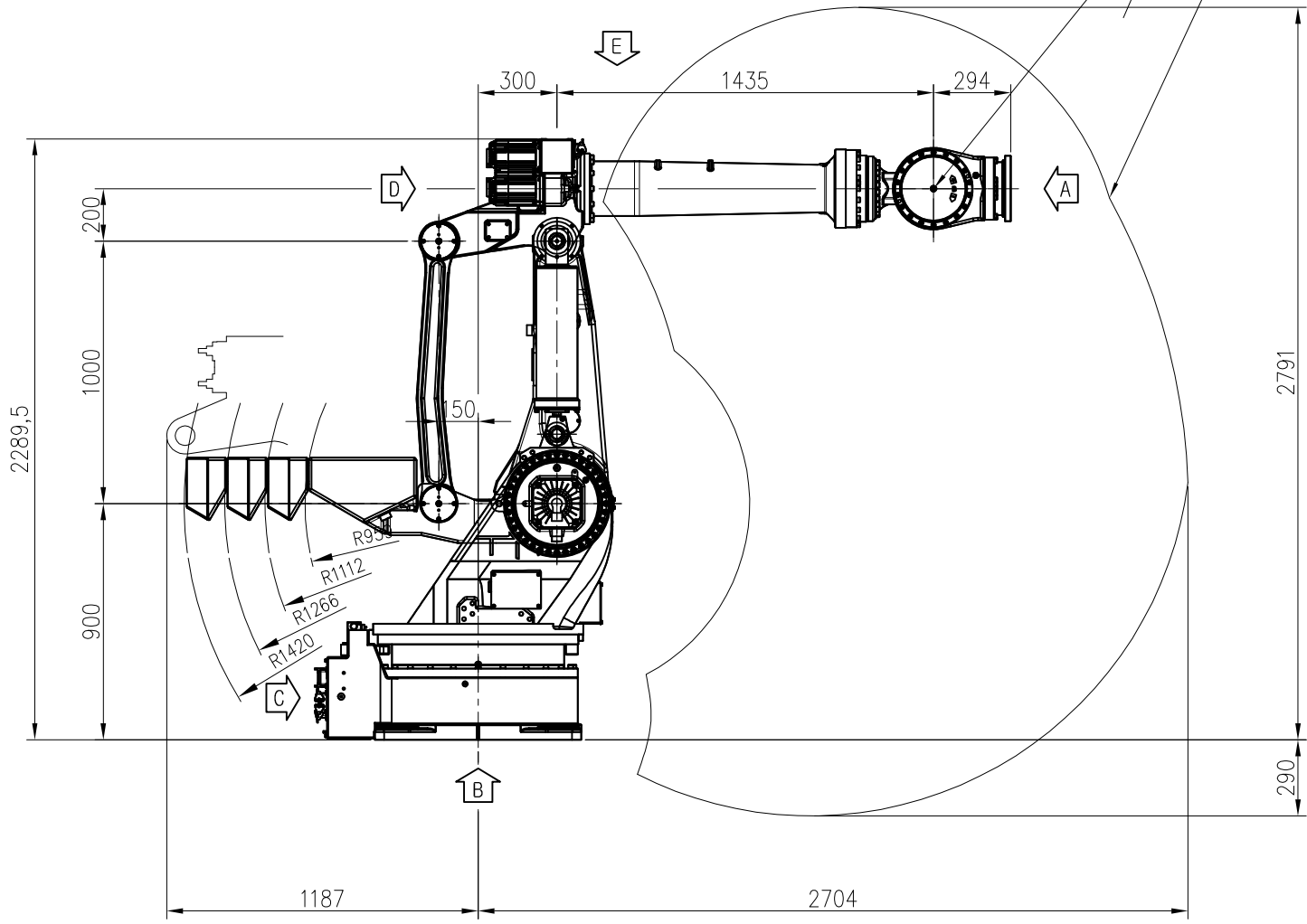
VIEW "B"



VIEW "E"



VIEW "C" <For Hi5a Controller>
(SCALE : 2/1)



VIEW "D"
(SCALE : 2/1)

MODEL	HX600	issue.0
DATE	2018.10.04	

TECHNICAL SPECIFICATION SUBJECT TO CHANGE WITHOUT NOTICE

