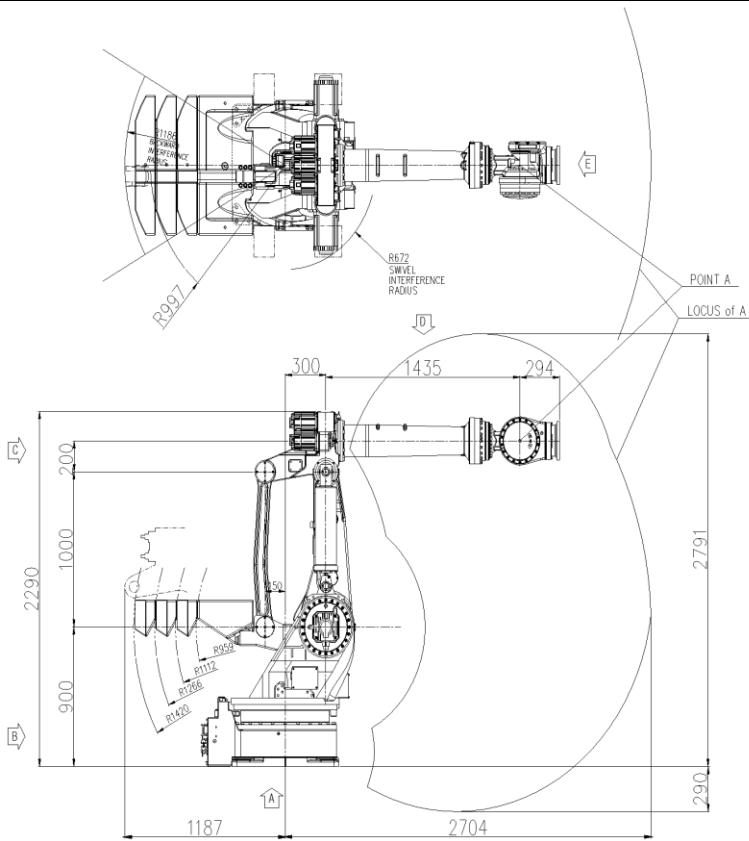


HX500

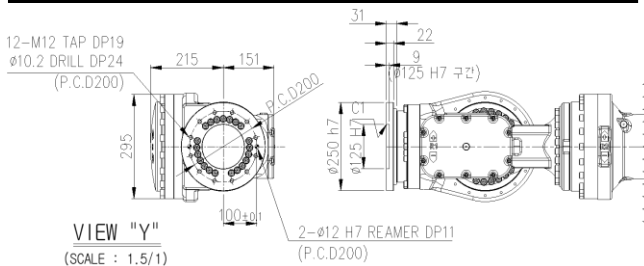
Payload 500Kgf

Installation method	
Floor	●
Ceiling	
Wall surface	

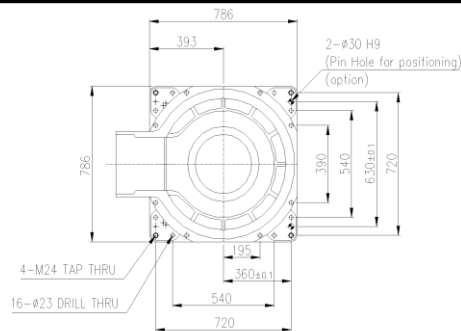
Application	
Spot welding	●
Arc welding	
Handling	●
Assembly	
Sealing	●
Painting	



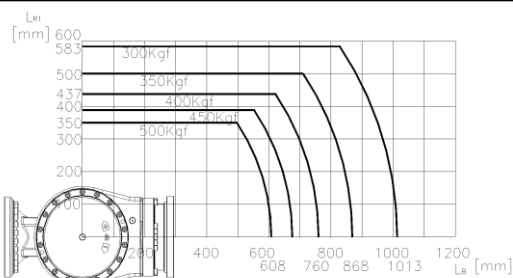
VIEW E: Detailed drawing of the wrist attachment part



VIEW A: Dimensional drawing for the floor installation of the body

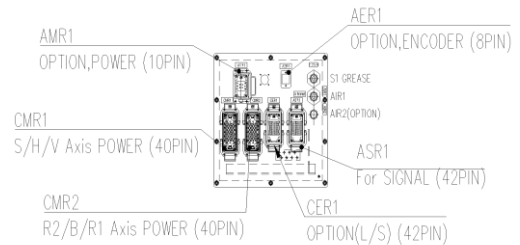


Wrist-axis torque line diagram

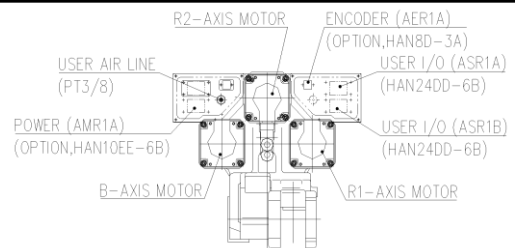


Item	Specification
Robot model	HX500
Payload	500 Kg
Structure	Articulated
Degree of freedom	6 Axes
Drive system	AC SERVO MOTOR
Max. working envelope	A S Swivel ± 3.142 rad ($\pm 180^\circ$)
	H Horizontal $+2.88 \sim +0.26$ rad ($+165^\circ \sim +15^\circ$)
	V Vertical $+1.04 \sim -1.22$ rad ($+60^\circ \sim -70^\circ$)
	Wrist R2 Rotation 2 ± 6.283 rad ($\pm 360^\circ$)
	B Bending ± 2.094 rad ($\pm 120^\circ$)
Max. working speed	A S Swivel 1.57 rad / s ($90^\circ / s$)
	H Horizontal 1.396 rad / s ($80^\circ / s$)
	V Vertical 1.396 rad / s ($80^\circ / s$)
	Wrist R2 Rotation 2 1.745 rad / s ($100^\circ / s$)
	B Bending 1.745 rad / s ($100^\circ / s$)
Wrist torque	R1 Rotation 1 2.792 rad / s ($160^\circ / s$)
	R2 Rotation 2 2,984 N.m (304 Kgf.m)
	B Bending 2,984 N.m (304 Kgf.m)
R1 Rotation 1 1,716 N.m (175 Kgf.m)	
Accuracy of position repeatability	± 0.08 mm
Ambient Temperature	0 ~ 45 °C (273 ~ 318 K)
Robot's Weight	3,130 Kg
Working envelope section area	4.95 m ²

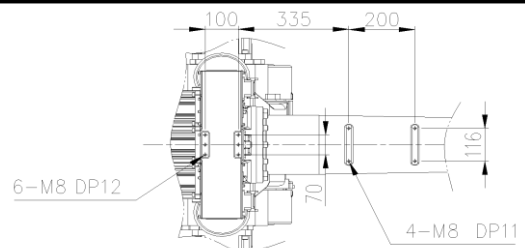
VIEW B: Application cable connection part (Option)



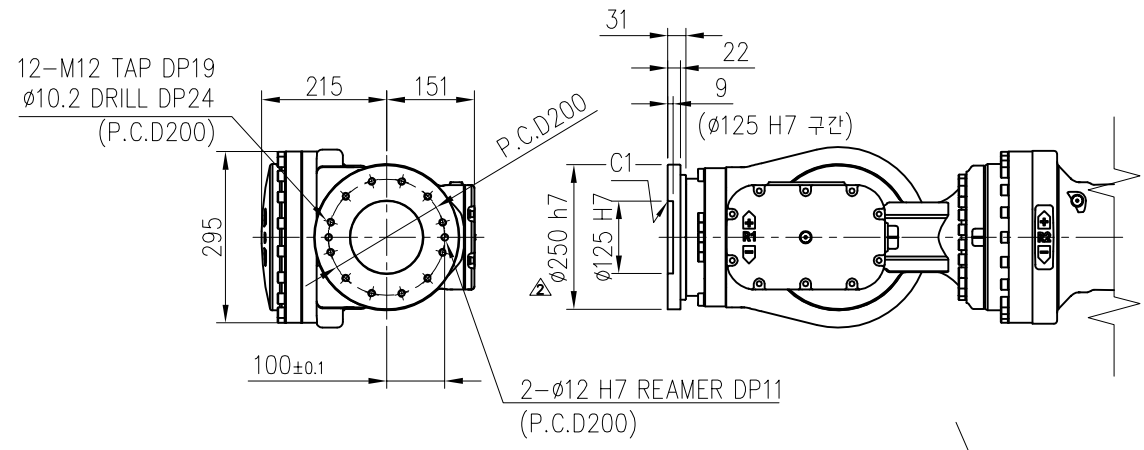
VIEW C: Application cable connection part (Option)



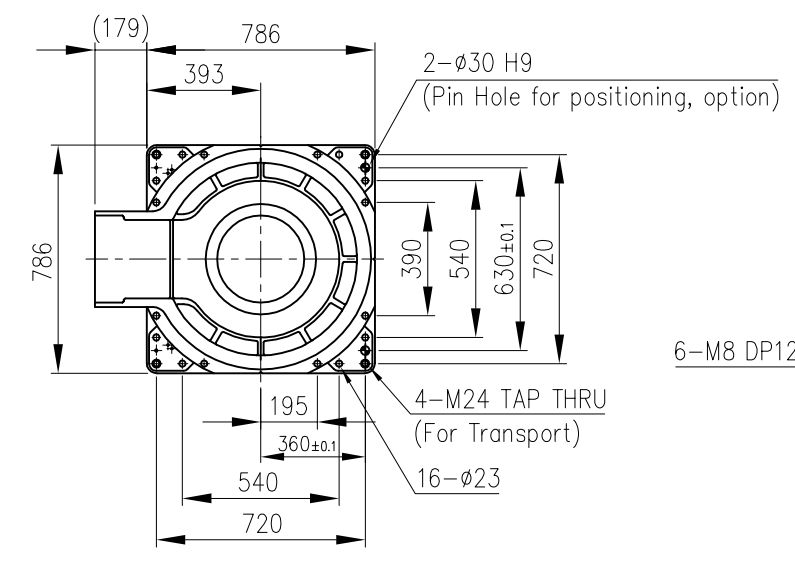
VIEW D: Details of the application ancillary part attachment



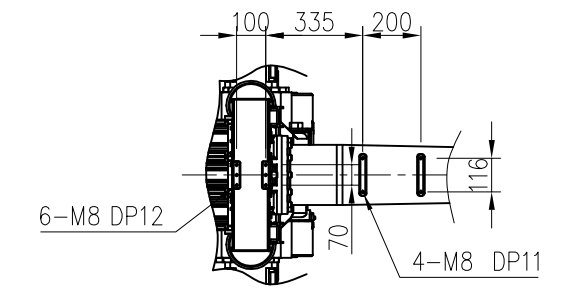
** For product improvement, some of the ratings, specifications, dimensions, etc. are subject to changes without notice.



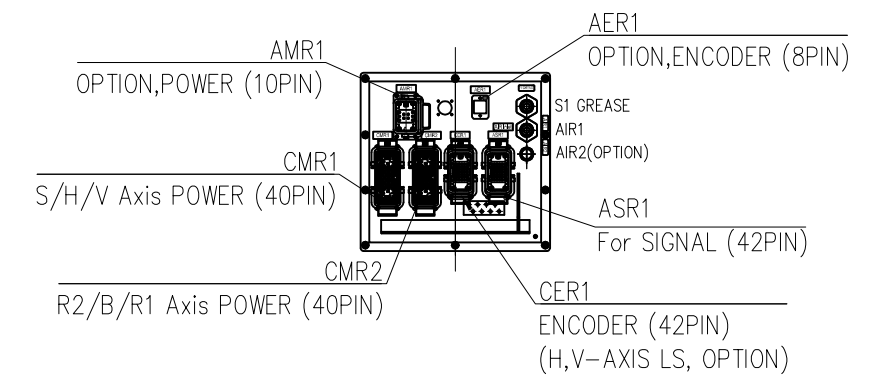
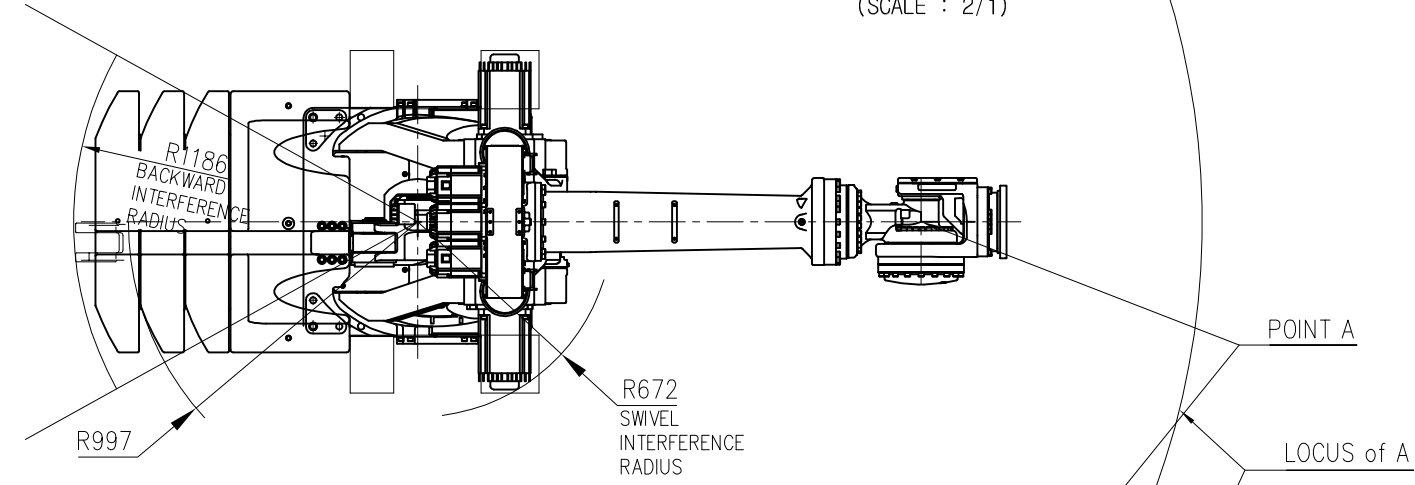
VIEW "A"
(SCALE : 2/1)



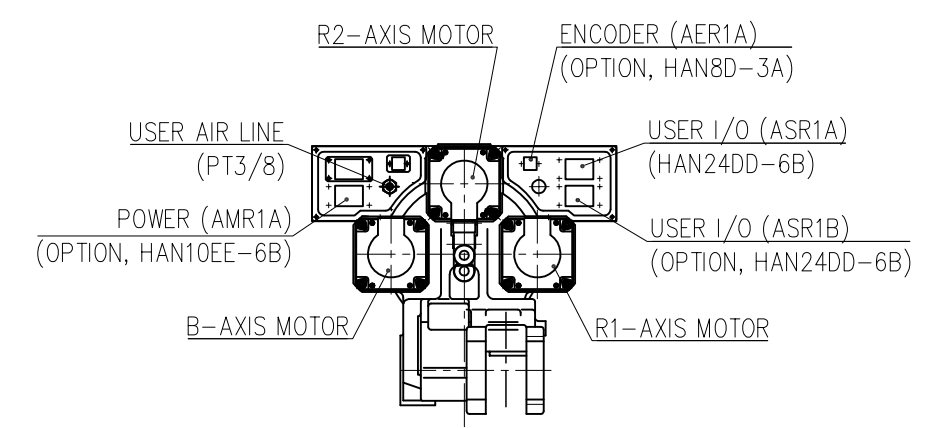
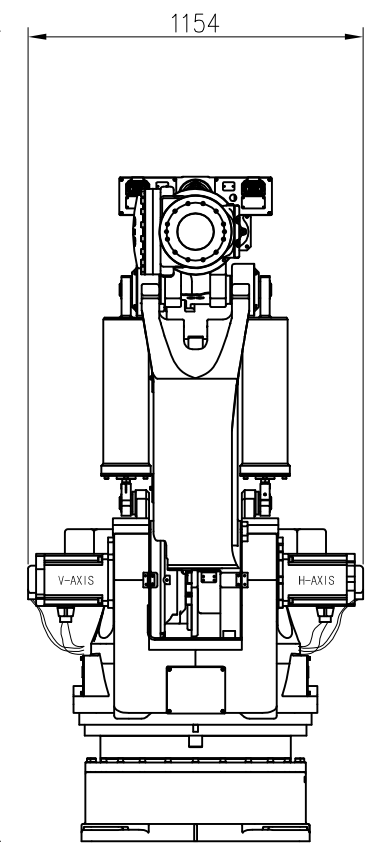
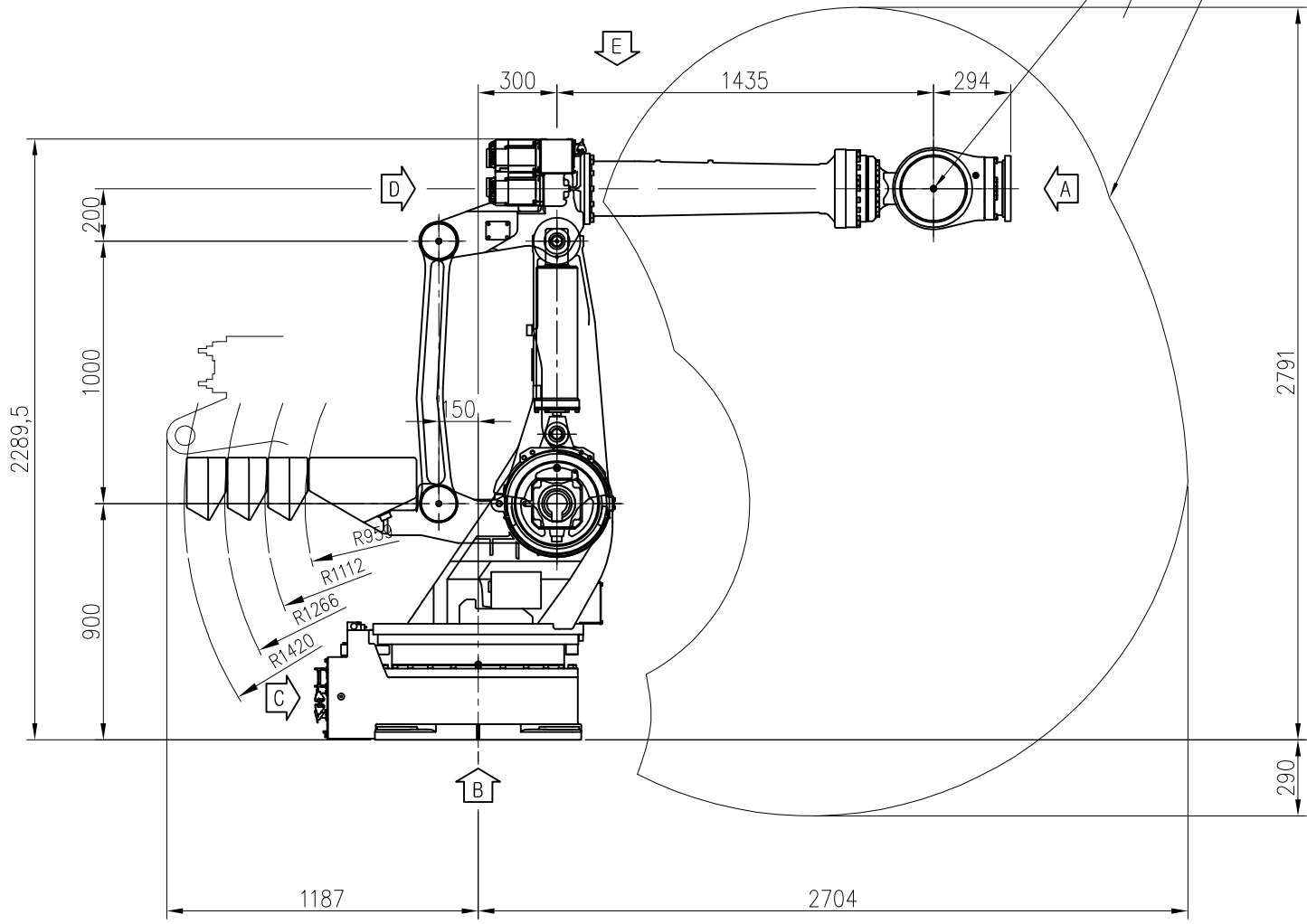
VIEW "B"



VIEW "E"



VIEW "C" <For Hi5a Controller>
(SCALE : 2/1)



VIEW "D"
(SCALE : 2/1)

MODEL	HX500	issue.0
DATE	2018.06.19	

TECHNICAL SPECIFICATION SUBJECT TO CHANGE WITHOUT NOTICE

