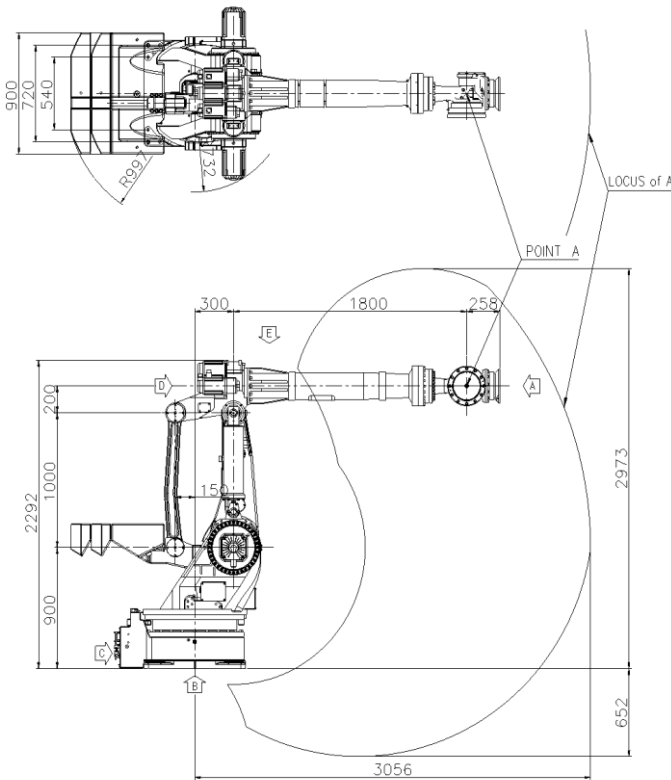


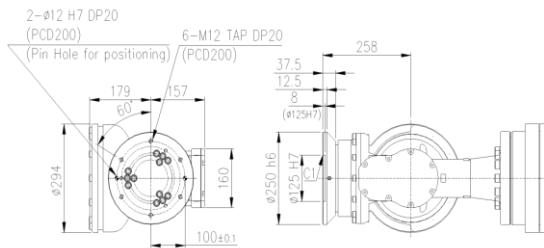
HX400L

Payload 400Kg

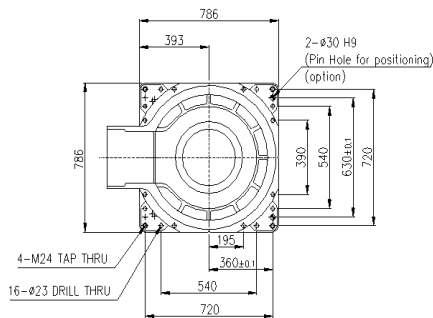
Installation method		Application	
Floor	●	Spot welding	●
Ceiling		Arc welding	●
Wall surface		Handling	●
		Assembly	●
		Sealing	●
		Painting	●



View A: Detailed drawing of the wrist attachment part

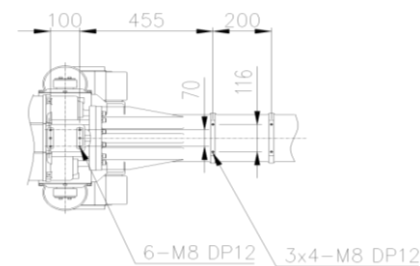


View B: Dimensional drawing for the floor installation of the body

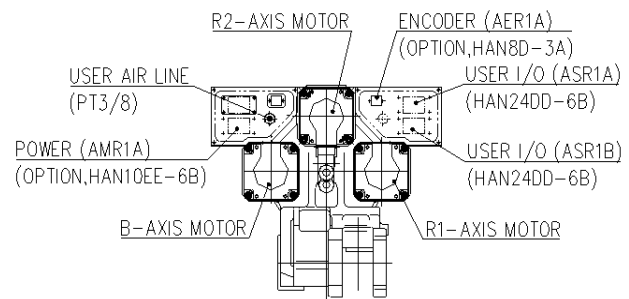


View C: Application cable connection part

View D: Application cable connection part

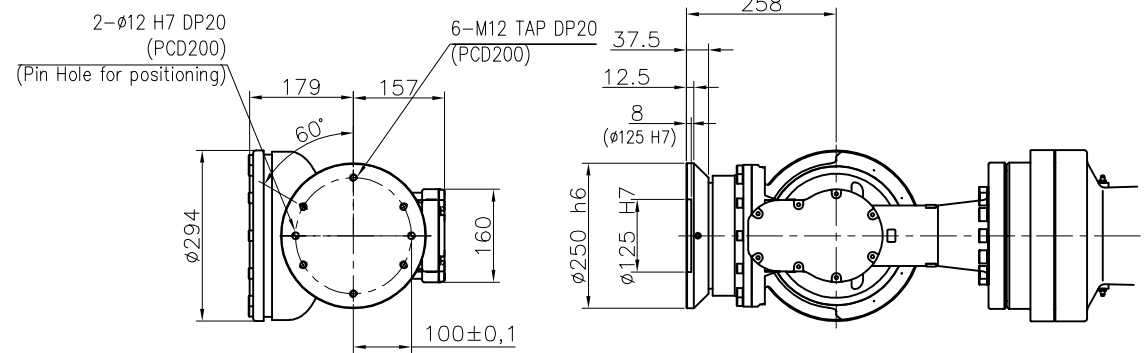


View E: Details of the application ancillary part attachment

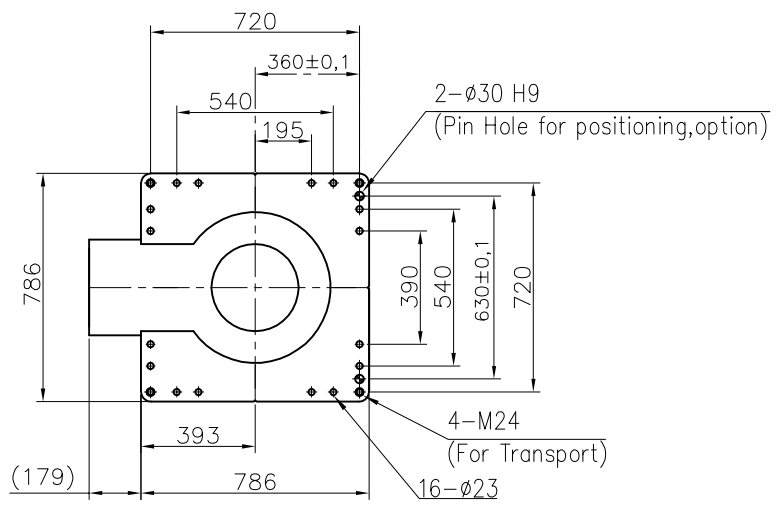


Item		Specification	
Robot model		HX400L	
Payload		400Kg	
Structure		Articulated	
Degree of freedom		6 axes	
Drive system		AC SERVO MOTOR	
Max. working envelope	Arm	S Swivel	±3.142 rad (±180°)
		H Horizontal	+2.88 ~ +0.26 rad (+165° ~ +15°)
		V Vertical	+0.52 ~ -2.18 rad (+60° ~ -70°)
	Wrist	R2 Rotation 2	±6.283 rad (±360°)
		B Bending	±2.09 rad (±120°)
		R1 Rotation 1	±6.283 rad (±360°)
Max. working speed	Arm	S Swivel	1.48 rad/s (85°/s)
		H Horizontal	1.48 rad/s (85°/s)
		V Vertical	1.48 rad/s (85°/s)
	Wrist	R2 Rotation 2	1.745 rad/s (100°/s)
		B Bending	1.745 rad/s (100°/s)
		R1 Rotation 1	2.792 rad/s (160°/s)
Wrist torque	R2 Rotation 2	1,960 N-m (200 kgf-m)	
	B Bending	1,960 N-m (200 kgf-m)	
	R1 Rotation 1	823 N-m (84 kgf-m)	
Accuracy of position repeatability		±0.08mm	
Ambient Temperature		0 ~ 40°C (273 ~ 313K)	
Robot's Weight		2,950Kg	
Working envelope section area		6.15m ²	

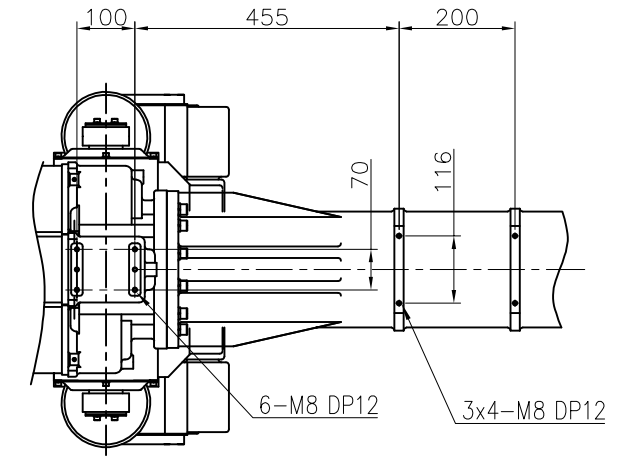
** For product improvement, some of the ratings, specifications, dimensions, etc. are subject to changes without notice.



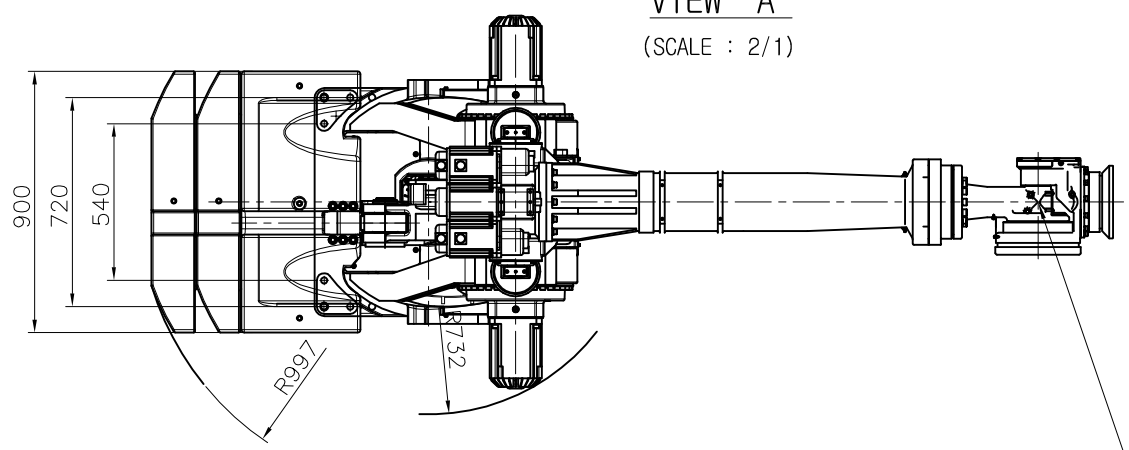
VIEW "A"
(SCALE : 2/1)



VIEW "B"
(SCALE : 1/1)

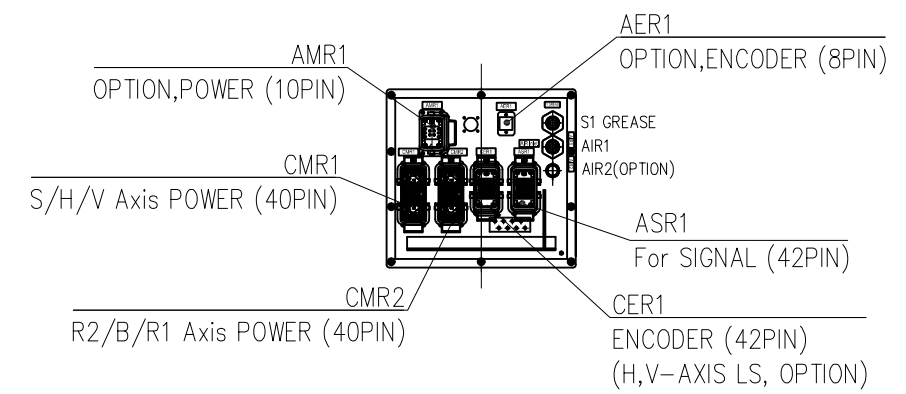


VIEW "E"
(SCALE : 2/1)

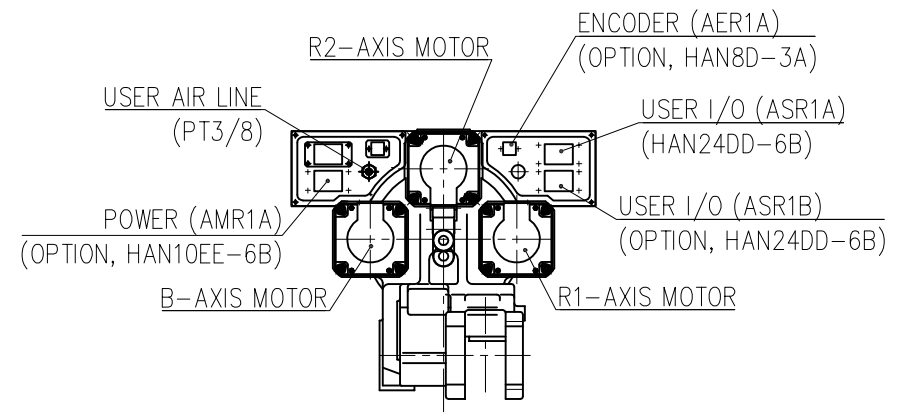
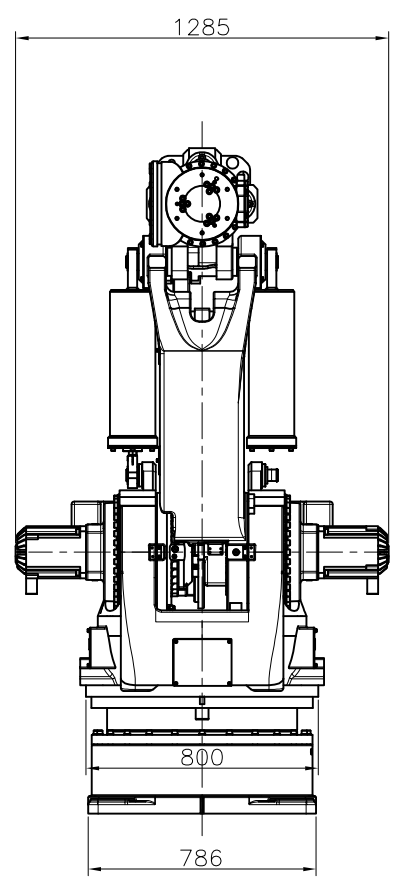
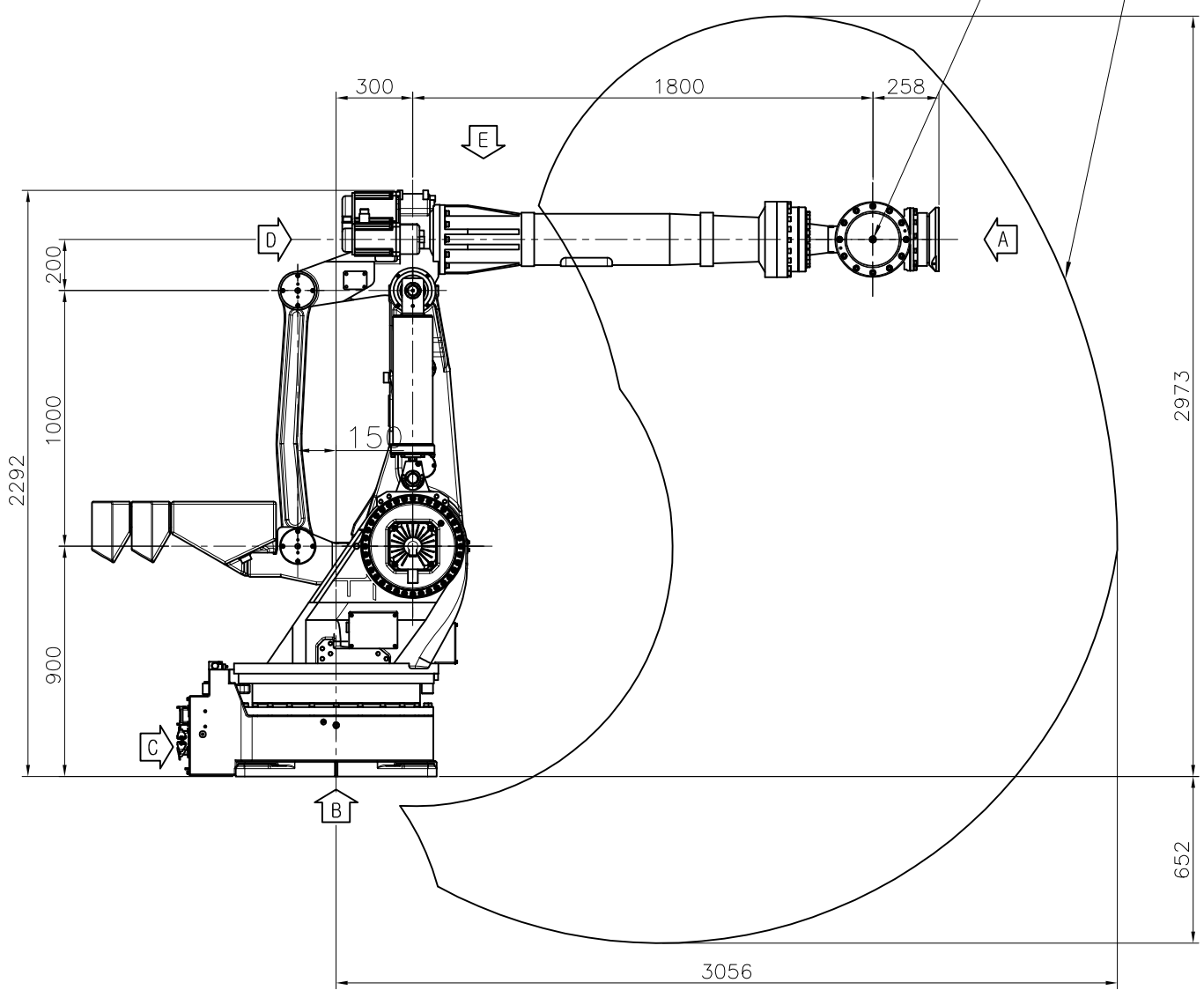


LOCUS of A

POINT A



VIEW "C" <For Hi5a Controller>
(SCALE : 2/1)



VIEW "D"
(SCALE : 2/1)

TECHNICAL SPECIFICATION SUBJECT TO CHANGE WITHOUT NOTICE

MODEL	HX400L	issue.0
DATE	2018.02.09	