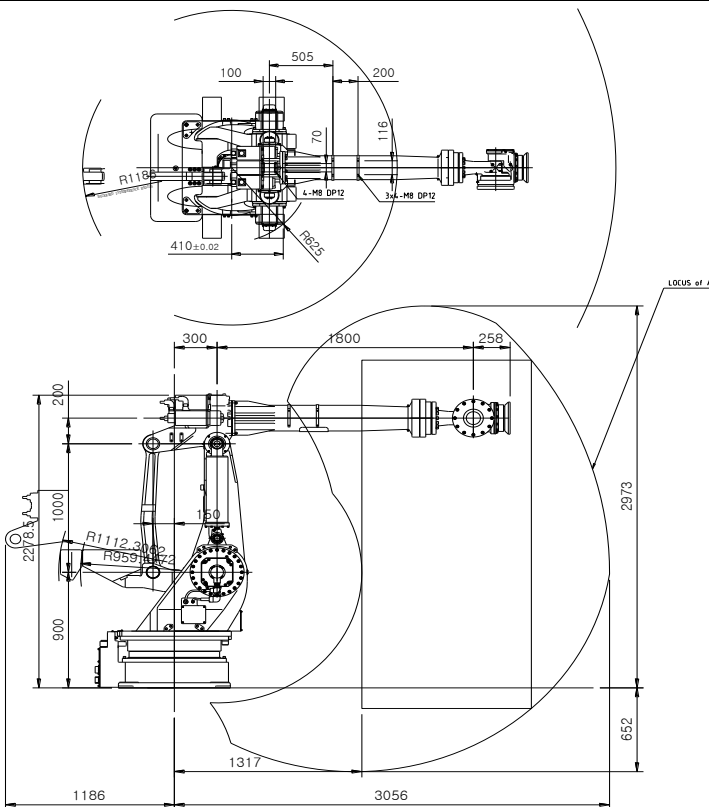


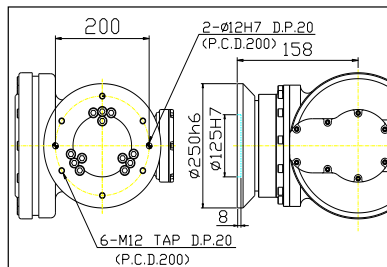
# HX300L

**Payload 300Kg**

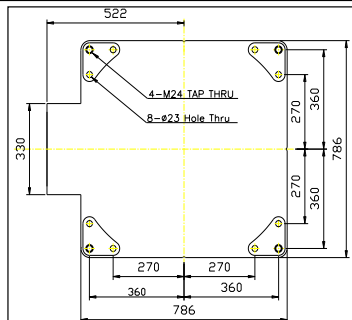
Installation method		Application	
Floor	●	Spot welding	●
Ceiling		Arc welding	●
Wall surface		Handling	●
		Assembly	●
		Sealing	●
		Painting	●



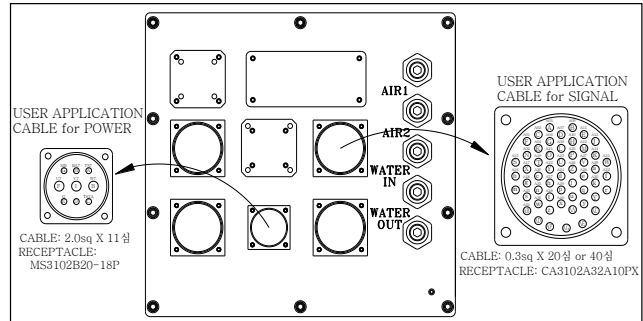
**View A: Detailed drawing of the wrist attachment part**



**View B: Dimensional drawing for the floor installation of the body**

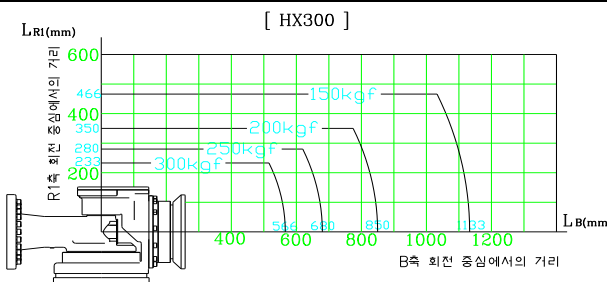


**View C: Application cable connection part**

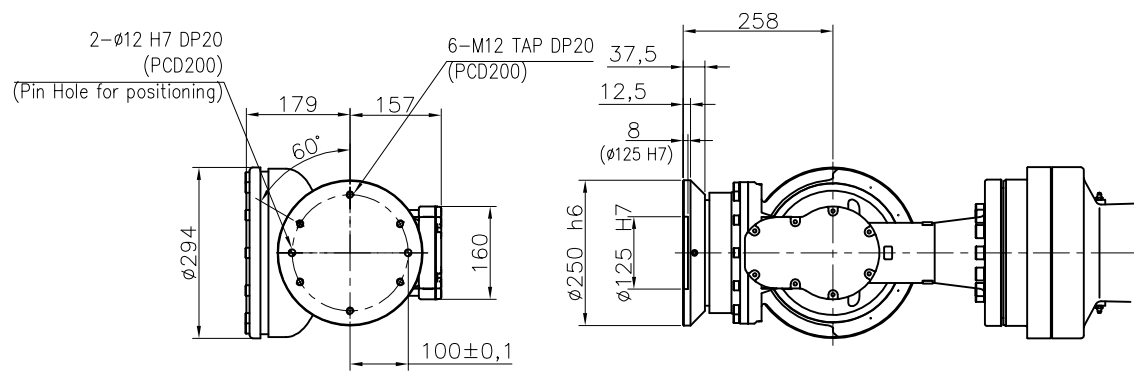


**View D: Application cable connection part**

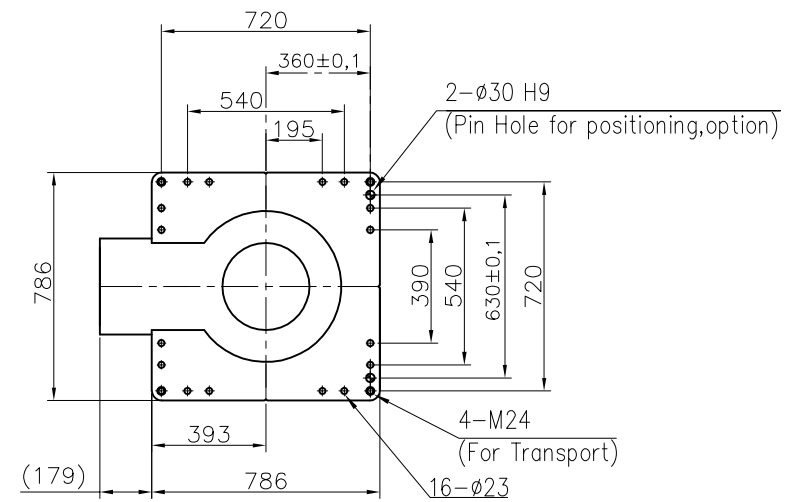
## Wrist-axis torque line diagram



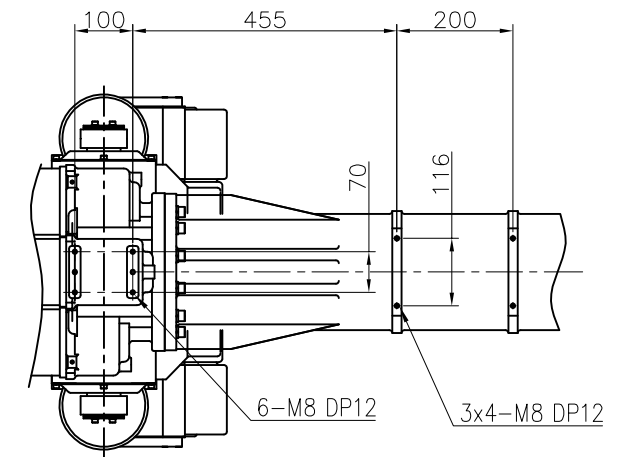
**\*\* For product improvement, some of the ratings, specifications, dimensions, etc. are subject to changes without notice.**



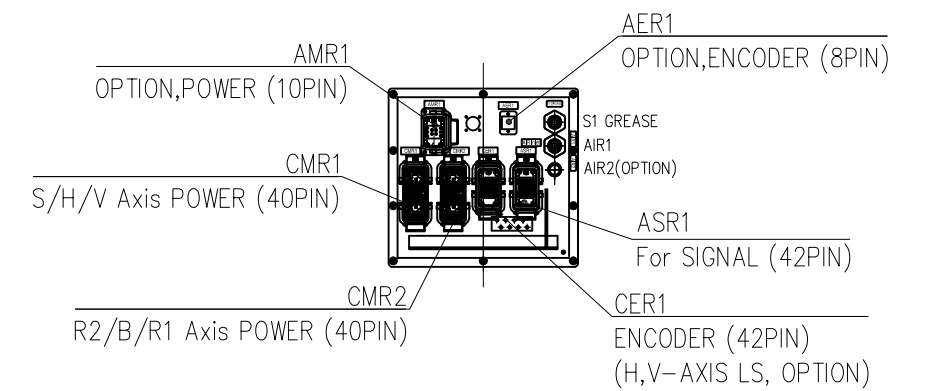
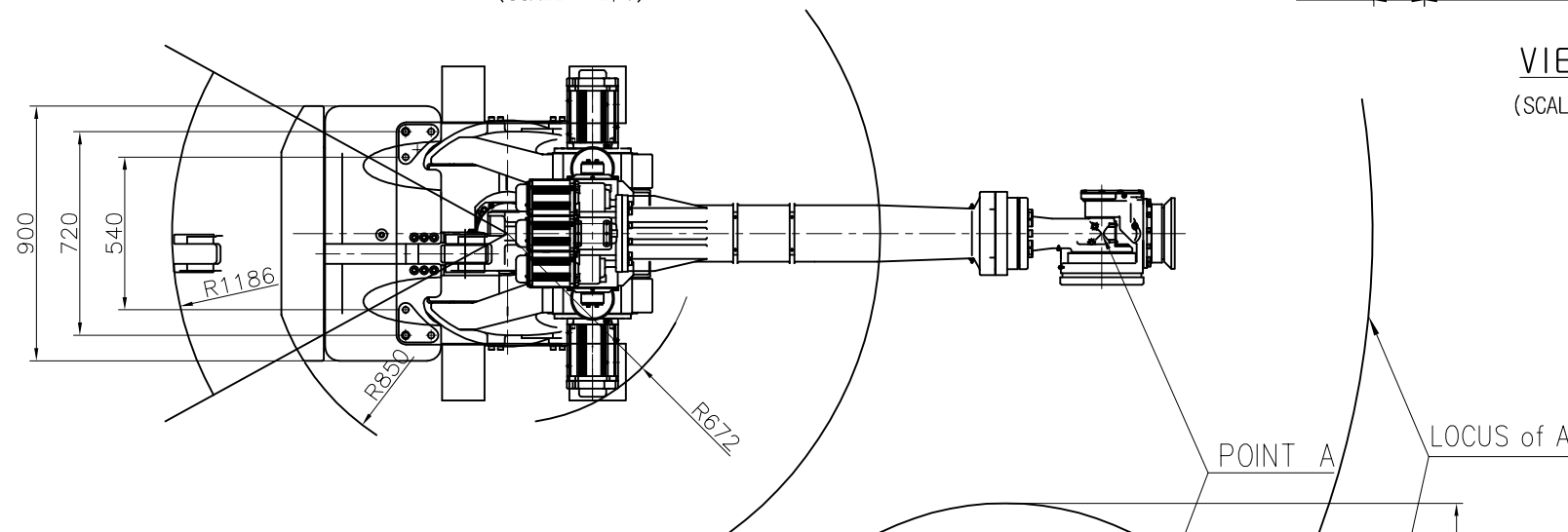
VIEW "A"  
(SCALE : 2/1)



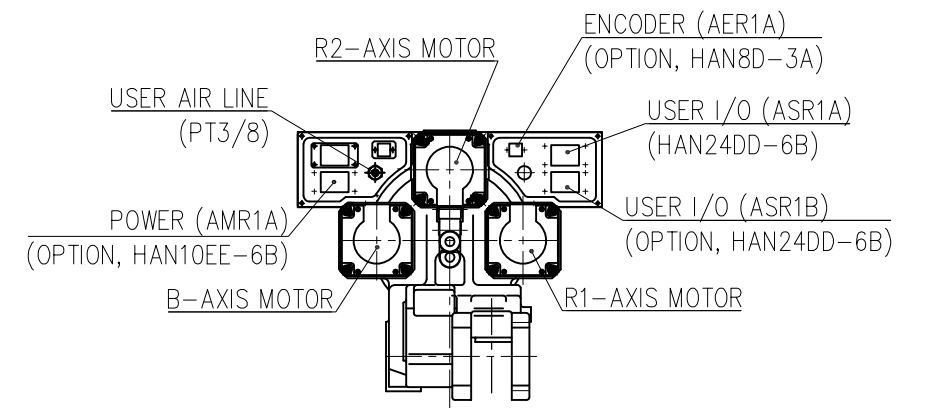
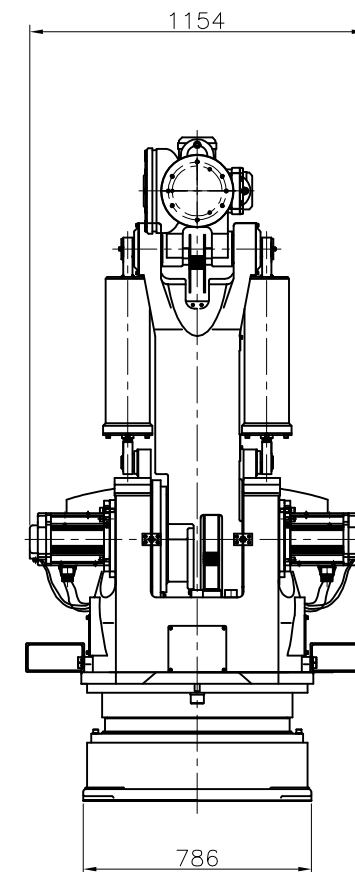
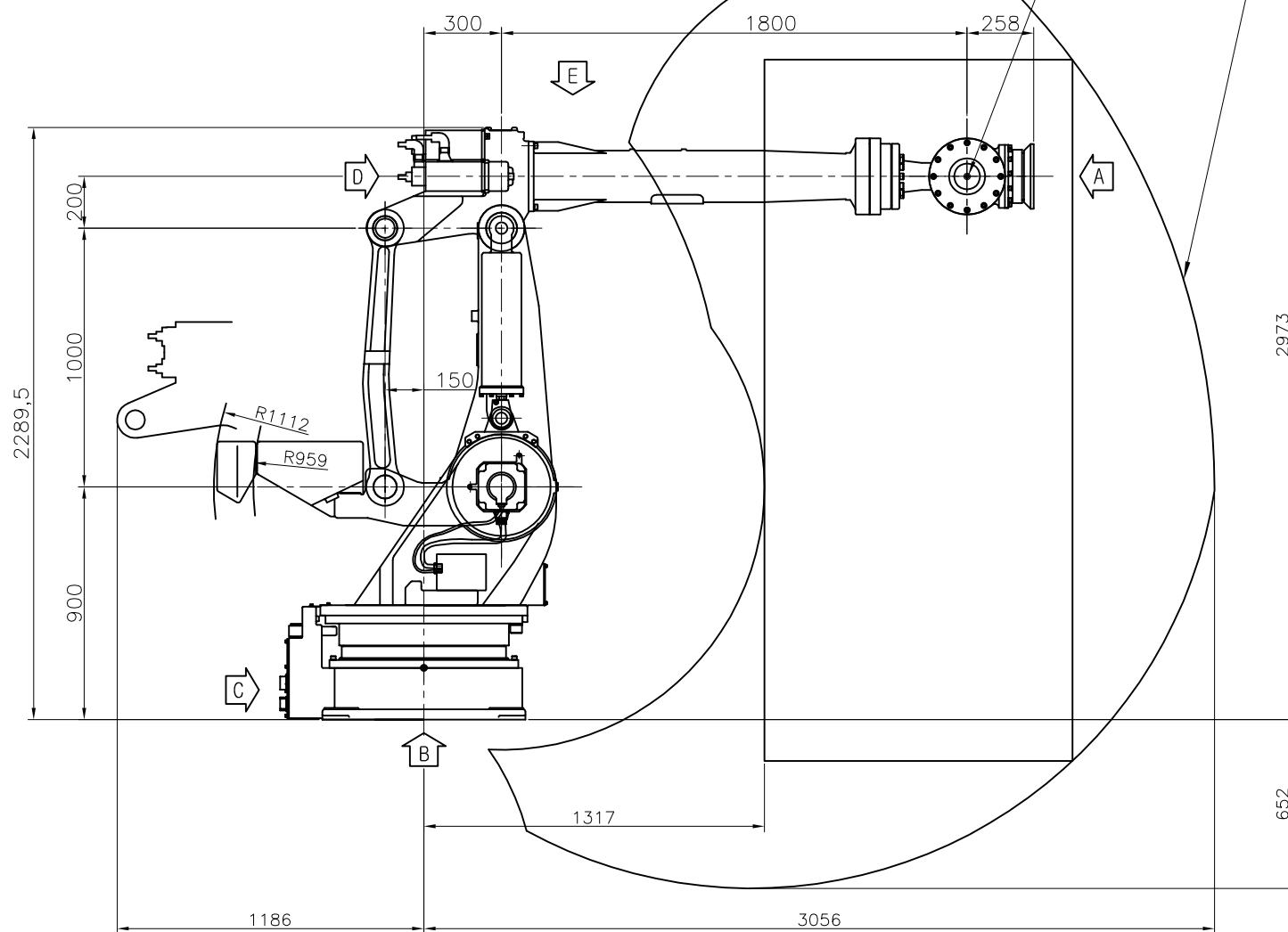
VIEW "B"  
(SCALE : 1/1)



VIEW "E"  
(SCALE : 2/1)



VIEW "C" <For Hi5a Controller>  
(SCALE : 2/1)



VIEW "D"  
(SCALE : 2/1)

TECHNICAL SPECIFICATION SUBJECT TO  
CHANGE WITHOUT NOTICE

MODEL	HX300L	issue.0
DATE	2018.06.19	

