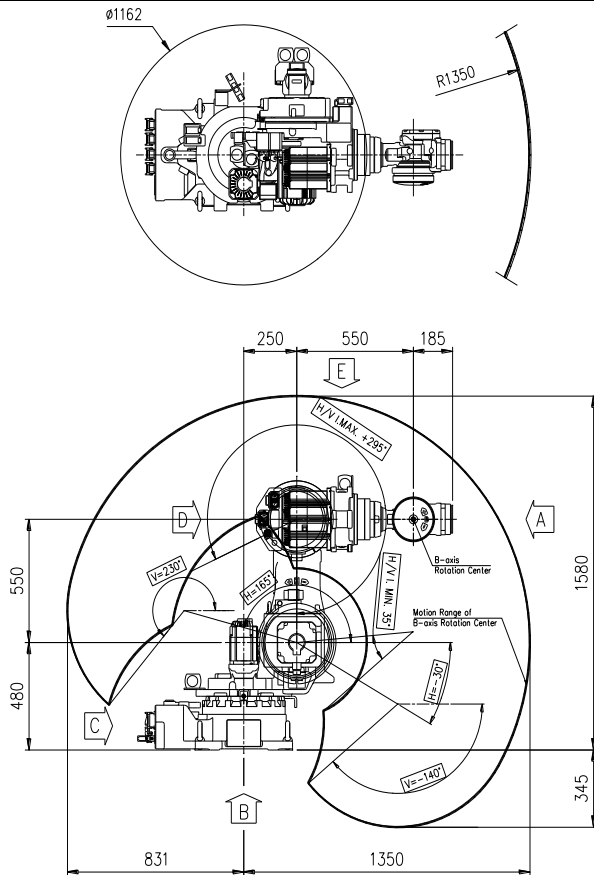


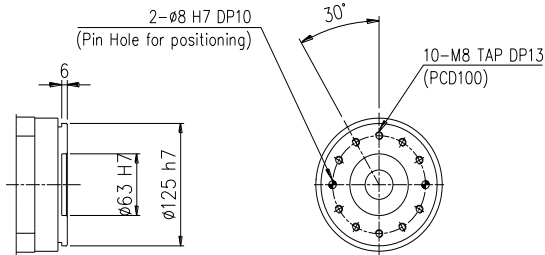
YS140D

Payload 140Kg

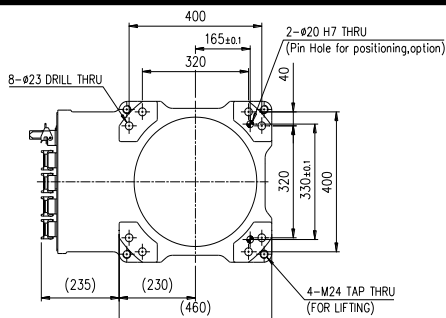
Installation method	Application
Floor	●
Ceiling	
Wall surface	
	Spot welding
	Arc welding
	Handling
	Assembly
	Sealing
	Painting



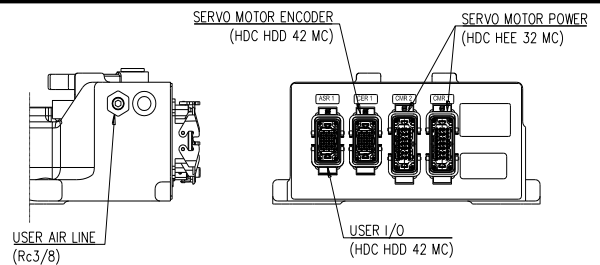
View A: Detailed drawing of the wrist attachment part



View B: Dimensional drawing for the floor installation of the body

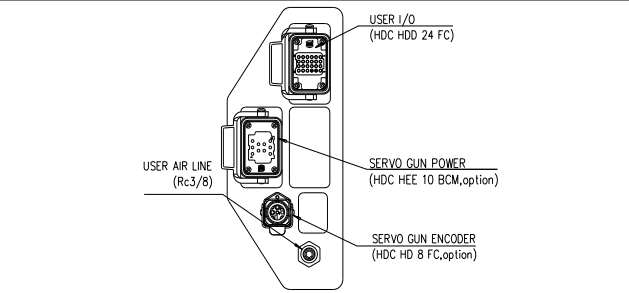
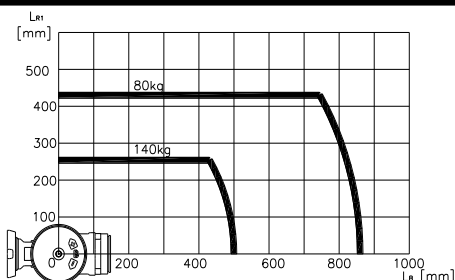


View C: Application cable connection part



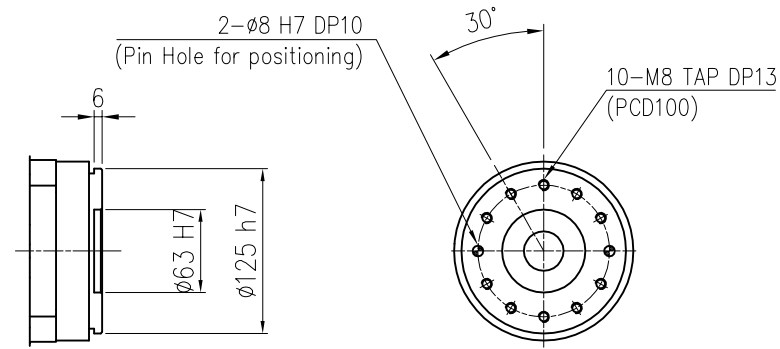
View D: Application cable connection part

Wrist-axis torque line diagram

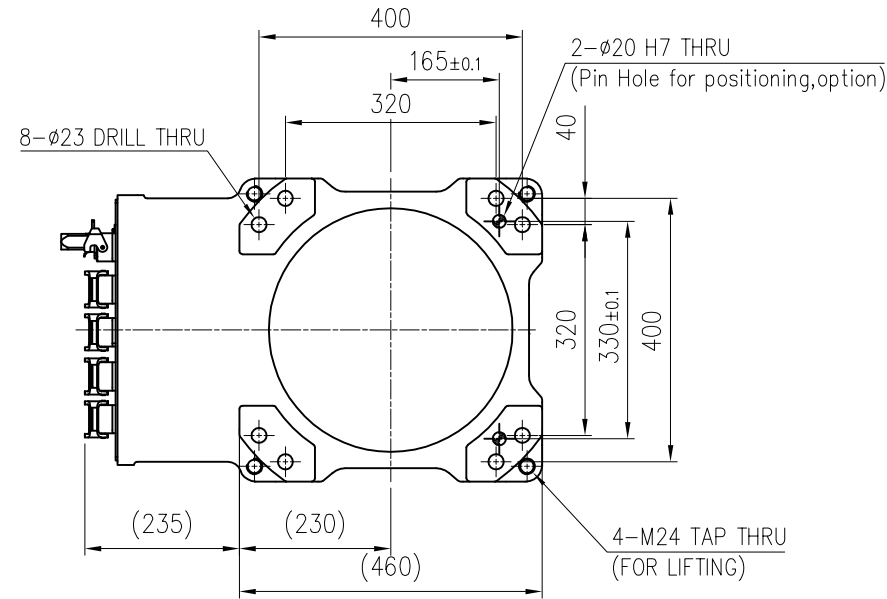


View E: Details of the application ancillary part attachment

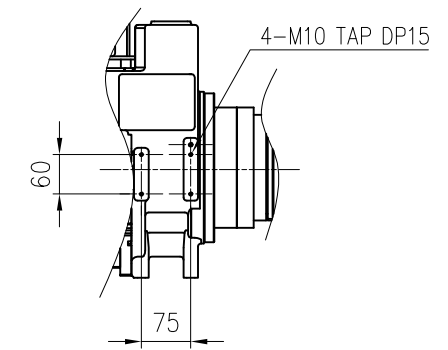
** For product improvement, some of the ratings, specifications, dimensions, etc. are subject to changes without notice.



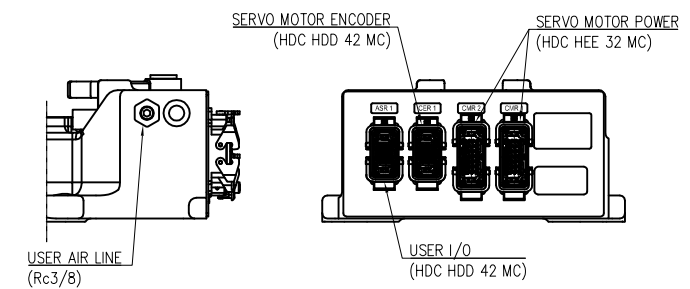
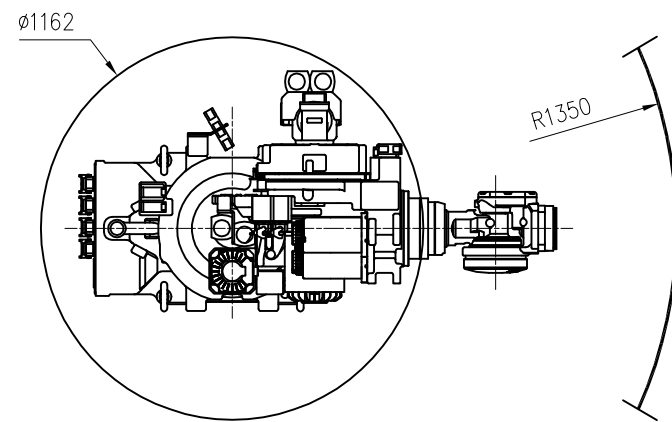
VIEW "A"
(SCALE : 4/1)



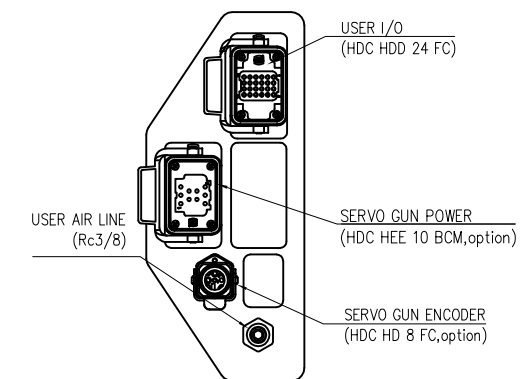
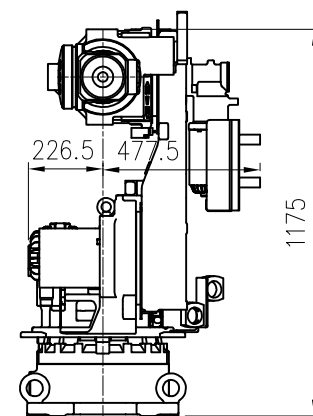
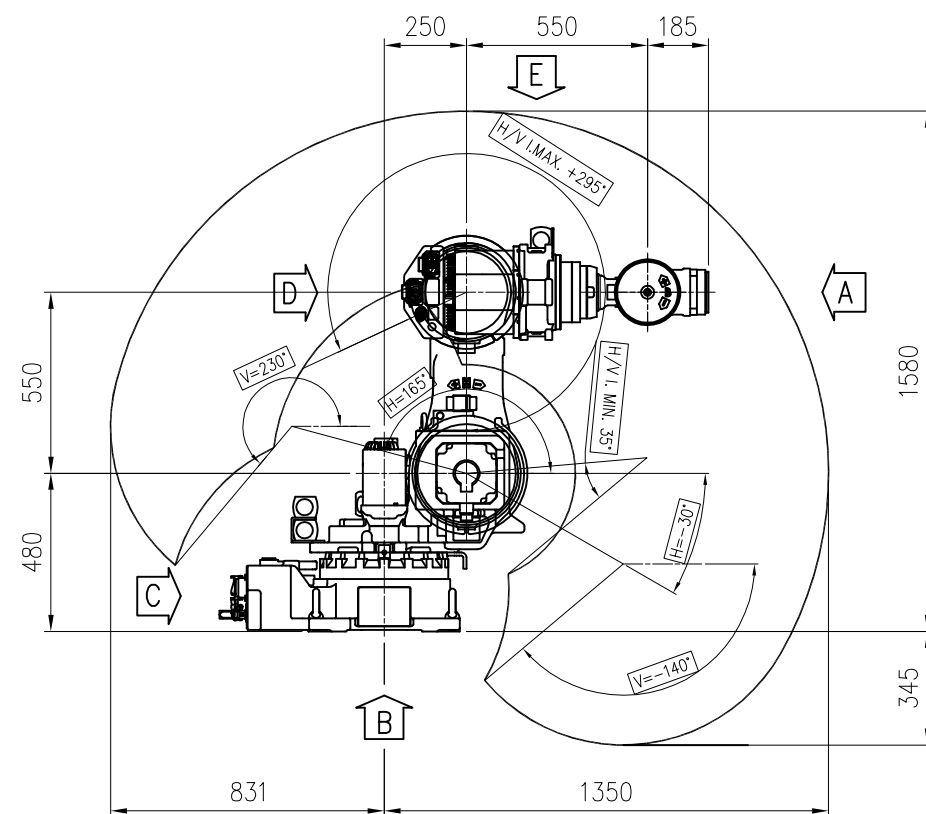
VIEW "B"
(SCALE 2/1)



VIEW "E"
(SCALE : 2/1)



VIEW "C"
(SCALE : 2/1)



VIEW "D"
(SCALE 4/1)

TECHNICAL SPECIFICATION SUBJECT
TO CHANGE WITHOUT NOTICE

MODEL	YS140D	issue.0
DATE	2018.06.19	

 **HYUNDAI ROBOTICS**