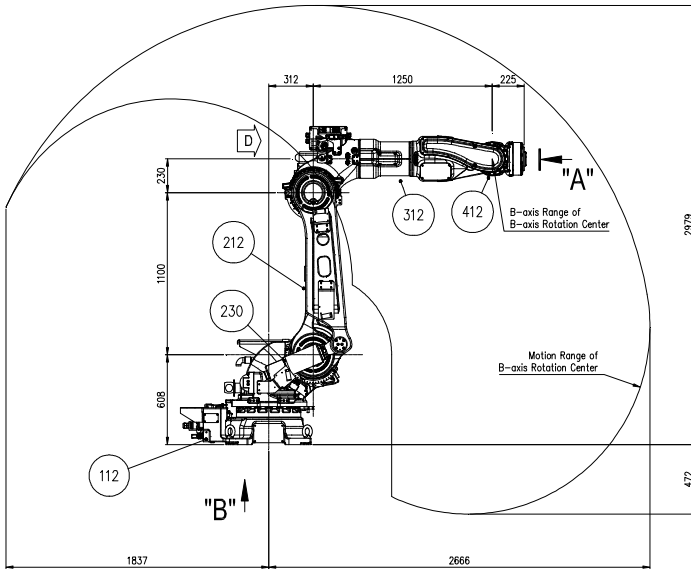
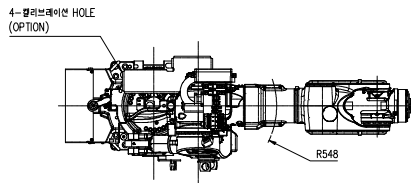


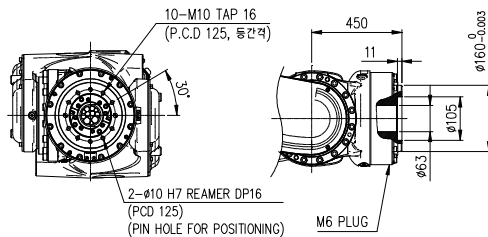
# HS210E

## Payload 210Kg

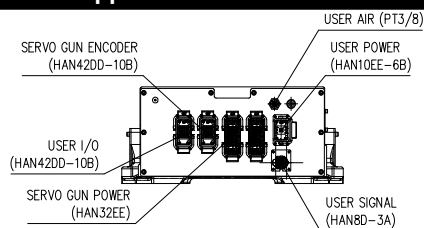
Installation method		Application	
Floor	●	Spot welding	●
Ceiling		Arc welding	●
Wall surface		Handling	●
		Assembly	●
		Sealing	
		Painting	



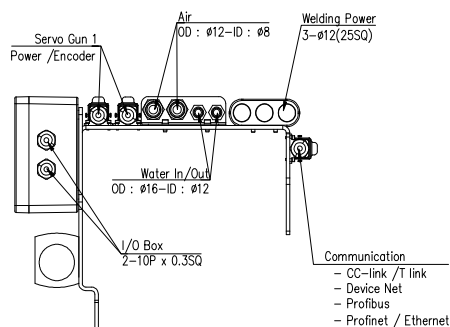
**View A: Detailed drawing of the wrist attachment part**



**View C: Application cable connection part**



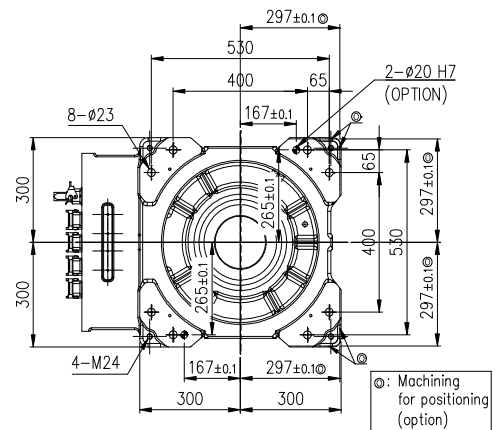
**View D: Details of the application ancillary part attachment**



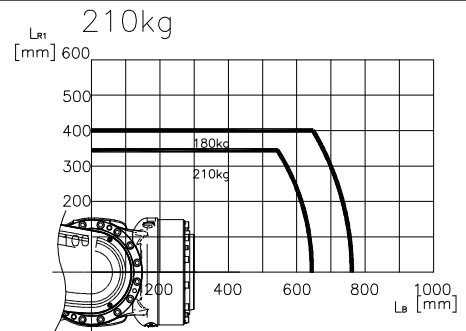
Item		Specification	
Robot model		HS210E	
Payload		210 Kg	
Structure		Articulated	
Degree of freedom		6 axes	
Max. working envelope	A r m*	S Swivel	±3.141 rad (±180°)
		H Horizontal	+0.175 ~ +2.705 rad (+10° ~ +155°)
		V Vertical	+1.396 ~ -1.309 rad (+80° ~ -75°)
	Wrist	R2 Rotation 2	±3.665 rad (±210°)
		B Bending	±2.182 rad (±125°)
R1 Rotation 1		±3.665 rad (±210°)	
Max. working speed	A r m	S Swivel	2.094 rad / s (120° / s)
		H Horizontal	1.833 rad / s (105° / s)
		V Vertical	1.920 rad / s (110° / s)
	Wrist	R2 Rotation 2	2.269 rad / s (130° / s)
		B Bending	2.269 rad / s (130° / s)
R1 Rotation 1		3.578 rad / s (205° / s)	
Wrist torque	R2 Rotation 2	1334 N·m (136 kgf·m)	
	B Bending	1334 N·m (136 kgf·m)	
	R1 Rotation 1	706 N·m ( 72 Kgf·m)	
Accuracy of position repeatability		±0.15 mm	
Ambient Temperature		0 ~ 45 °C (273 ~ 318 K)	
Robot's Weight		970 Kg	

\* When the optional limit switch is attached, the action range of the main axis will be limited (see the manual)

**View B: Dimensional drawing for the floor installation of the body**



**Wrist-axis torque line diagram**



\*\* For product improvement, some of the ratings, specifications, dimensions, etc. are subject to changes without notice.