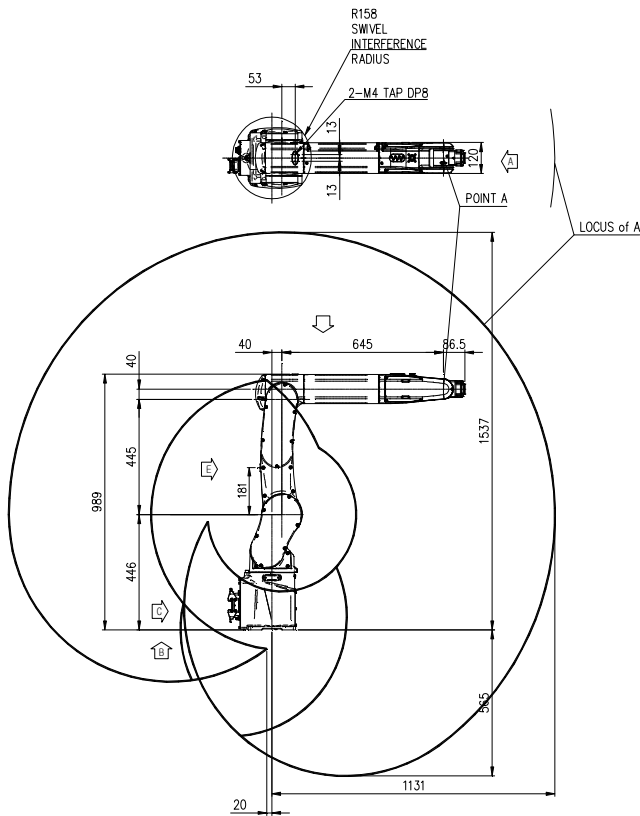


HH4L

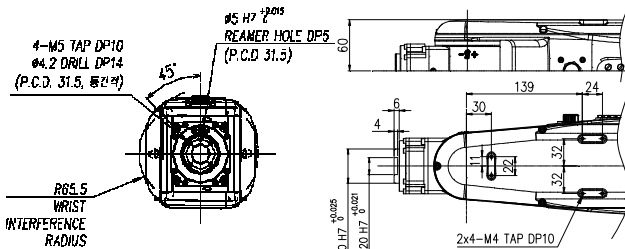
Installation method		Application	
Floor	●	Spot welding	
Ceiling	●	Arc welding	
Wall surface	●	Handling	●
		Assembly	●
		Sealing	●
		Painting	●



View A: Detailed drawing of the wrist attachment

Item		Specification		
Robot model		HH4L		
Payload		4 Kg		
Structure		Articulated		
Degree of freedom		6 axes		
Drive system		AC SERVO MOTOR		
Max. working envelope	Arm	A	S Swivel	± 2.967 rad ($\pm 170^\circ$)
		H	Horizontal	55°
		V	Vertical	$+3.71 \sim -1.22$ rad ($+213^\circ \sim -70^\circ$)
	Wrist	R2	Rotation 2	± 3.316 rad ($\pm 190^\circ$)
		B	Bending	± 2.356 rad ($\pm 135^\circ$)
Max. working speed	Arm	R1	Rotation 1	± 6.283 rad ($\pm 360^\circ$)
		A	S Swivel	5.235 rad / s (300° / s)
		H	Horizontal	4.014 rad / s (230° / s)
	Wrist	V	Vertical	6.283 rad / s (360° / s)
		R2	Rotation 2	9.599 rad / s (550° / s)
Wrist torque	B	Bending	9.599 rad / s (550° / s)	
	R1	Rotation 1	17.453 rad / s (1000° / s)	
	R2	Rotation 2	6 N.m (0.61 Kgf.m)	
		B	Bending	6 N.m (0.61 Kgf.m)
		R1	Rotation 1	2.9 N.m (0.30 Kgf.m)
Accuracy of position repeatability		± 0.03 mm		
Ambient Temperature		$0 \sim 45^\circ\text{C}$ ($273 \sim 318$ K)		
Robot's Weight		43 Kg		
Working envelope section area		3.45 m ²		

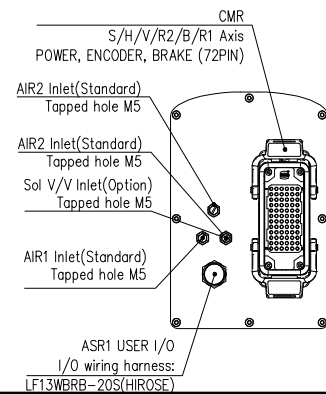
*) When the optional limit switch is attached, the action range of the main axis will be limited (see the manual)



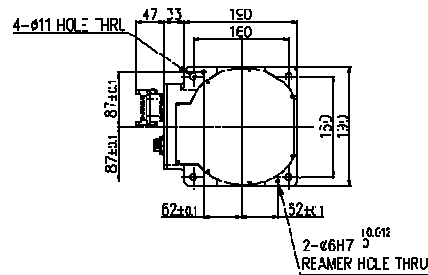
View B: Dimensional drawing for the floor installation of the body

View G: Application part mounting

View C: Application cable connection part

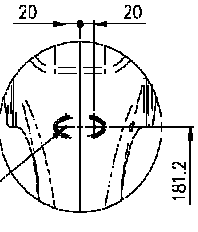
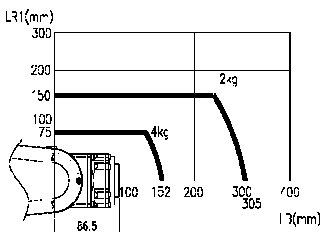
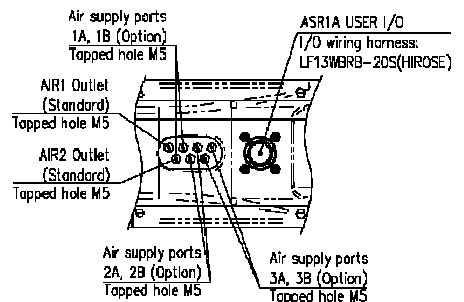


View D: Application cable connection part

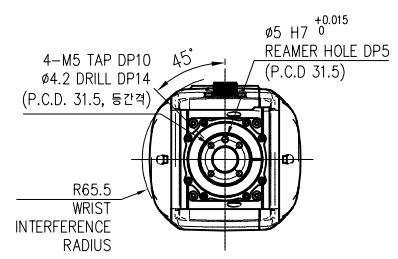


Wrist-axis torque line diagram

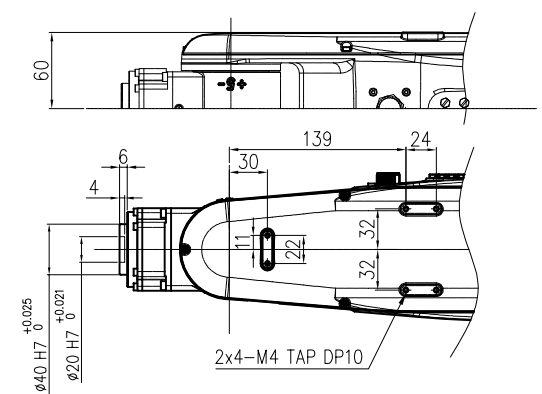
View E: Application part mounting



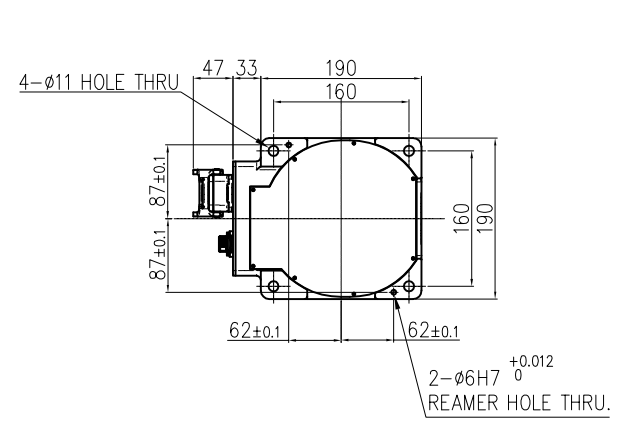
** For product improvement, some of the ratings, specifications, dimensions, etc. are subject to changes without notice



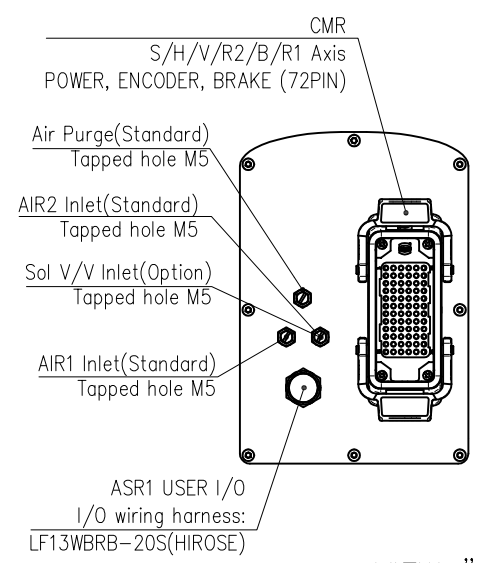
VIEW "A"



VIEW "F"

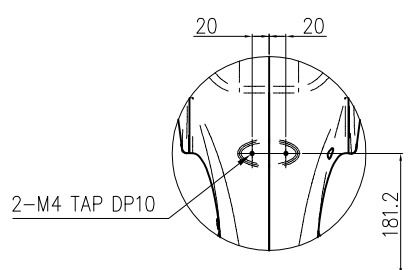
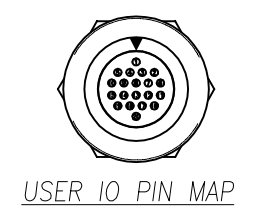


VIEW "B"

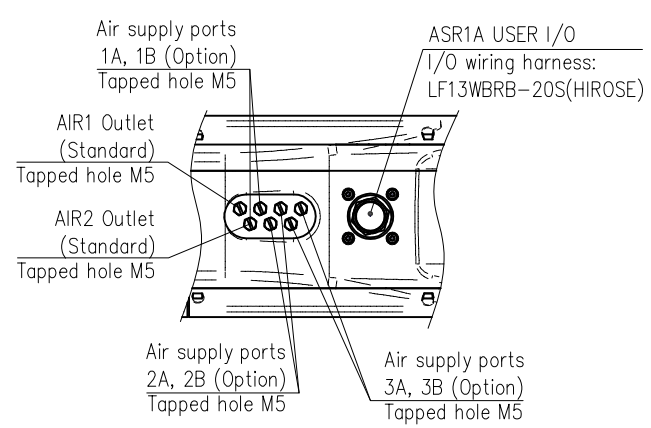
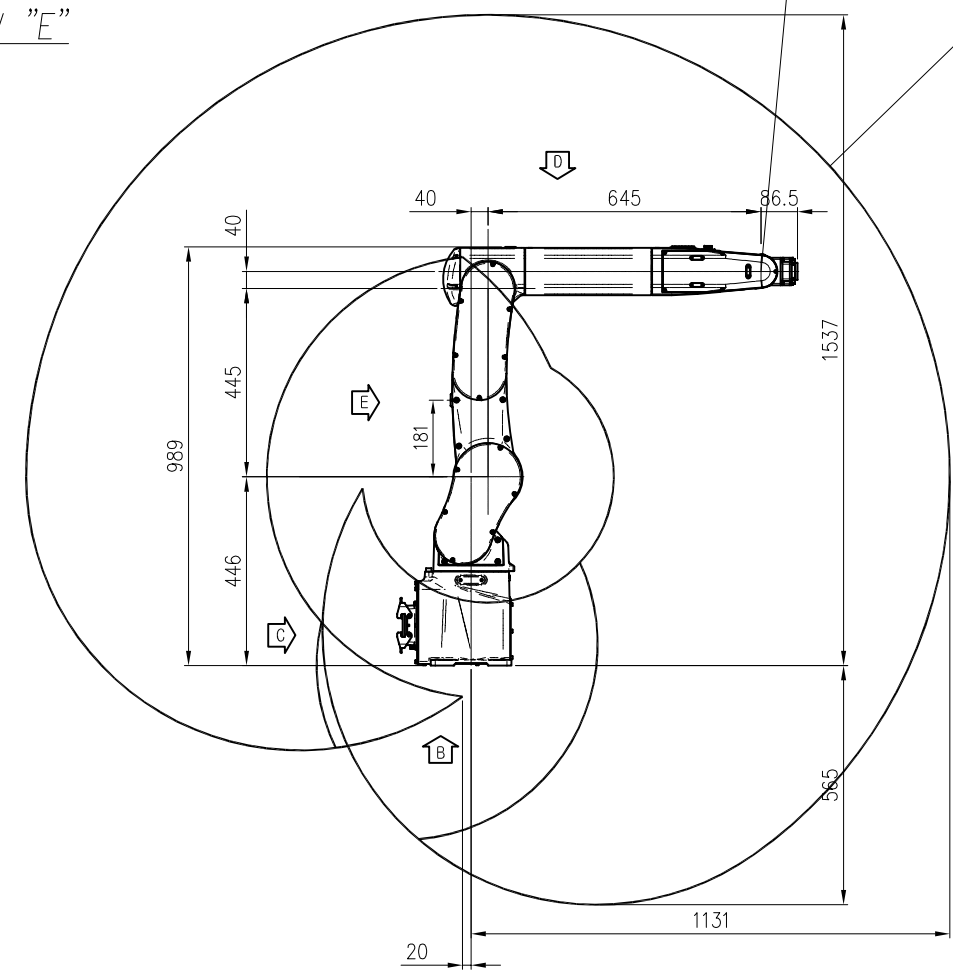
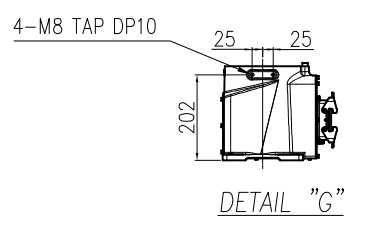
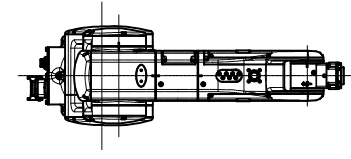
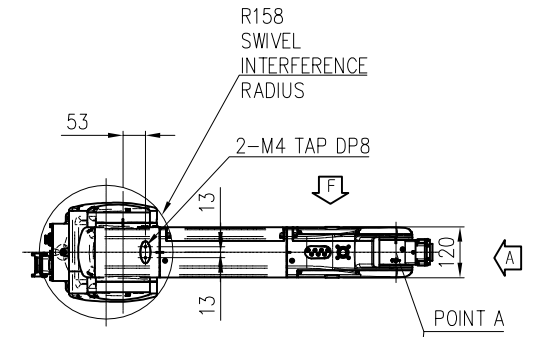


VIEW "C"

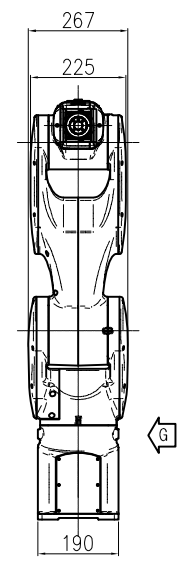
ASR1 / ASR1A User IO Wiring Harness				
Pin No.	Description	Pin No.	Description	Option
1	1 (User IO)	11	11 (User IO)	
2	2 (User IO)	12	12 (User IO)	1A(sol v/v)
3	3 (User IO)	13	13 (User IO)	1B(sol v/v)
4	4 (User IO)	14	14 (User IO)	2A(sol v/v)
5	5 (User IO)	15	15 (User IO)	2B(sol v/v)
6	6 (User IO)	16	16 (User IO)	3A(sol v/v)
7	7 (User IO)	17	17 (User IO)	3B(sol v/v)
8	8 (User IO)	18	18 (User IO)	G(sol v/v)
9	9 (User IO)	19	-	
10	10 (User IO)	20	-	



VIEW "E"



VIEW "D"



MODEL	issue.3
DATE	2020.11.16

TECHNICAL SPECIFICATION SUBJECT TO
 CHANGE WITHOUT NOTICE

